

MILTON MATTERS

Issue No 12

Milton Neighbourhood Forum

May 2000



*MILTON COMMUNITY
Young and Old – Pulling Together*

Next Forum

Wed 24th May 2000 at 7:00pm – Milton Campus Lecture Hall

*** AGENDA ***

Langstone Campus – Development options
Community Policing – an Update
E – Government – new Technology
Benefits Agency – (To be Confirmed)
Street Drinking – The Public Perception

Pompey Savers

CREDIT UNION

157 Elm Grove, Southsea PO5 1LJ

023 9282 7980

A new credit Union has been set up for people who live, or work in Portsmouth. Its aim is to provide a convenient means of enabling people to save and borrow at a low interest rate – the following details provide more information.

If you would like further details then contact Ross Underwood at the above address.

What is a Credit Union

A credit union is a democratic financial co-operative owned and controlled by its members. It is registered by the registrar of Friendly Societies and its activities are controlled by Act of Parliament. It is non-profit making and any surpluses that it makes are used for the benefit of its members.

Are Credit Unions something new?

No, Credit Unions have been in existence for over 150 years in other countries, and for nearly 40 years in Britain. In America, 25% of the population belong to a Credit Union.

Who runs the Credit Union?

The Credit Union is run by its members who elect a Board of directors at an A.G.M. All Directors and other Committee members are unpaid volunteers and will be appropriately trained.

How is the Credit Union managed?

The Board of directors decide upon policies and experienced staff will be employed to manage the credit Union on a day-to-day basis. The main office will be located in Commercial Road, Portsmouth.

What are the benefits of membership?

A convenient means of saving

Members can save as little or as much as they like.

Easily arranged and low cost loans.

Free life savings and loan protection insurance.

Surpluses returned to members.

Who can join?

Everyone who lives or works within the area of Portsmouth City council and any member of their family can join by paying £1. Children are also encouraged to start saving and there is a Junior Savers Section for those under 16 years of age.

How are savings made?

Members are encouraged to save regularly, however small the amount. Savings can be made at collection points which will be established at community Centres throughout the city, or by bankers order or payroll deductions arranged by their employer.

Do Savings earn Interest?

At the end of each year, the Board of Directors decide upon the amount that can be distributed to members as a dividend calculated on each members savings. The dividend will depend upon the level of surpluses available for distribution to the members.

Where does the Credit Union invest members' savings?

Members' savings cannot be put at risk, so that investments such as stocks and shares are not permitted. Members' savings will be placed on deposit at banks or Building Societies.

How much can be borrowed?

Loans are granted to members on the basis of their savings record, their ability to repay and according to the loans policy of the Credit Union. A first loan could be up to twice the level of savings. Subsequent loans could be higher.

Is interest paid on the loan?

Interest is calculated at 1% of the outstanding balance each month. This is equivalent to only 12.68% APR. For example, on a £500 loan repaid over 12 months, only £33 interest payment would be made – substantially less than some loan companies charge.

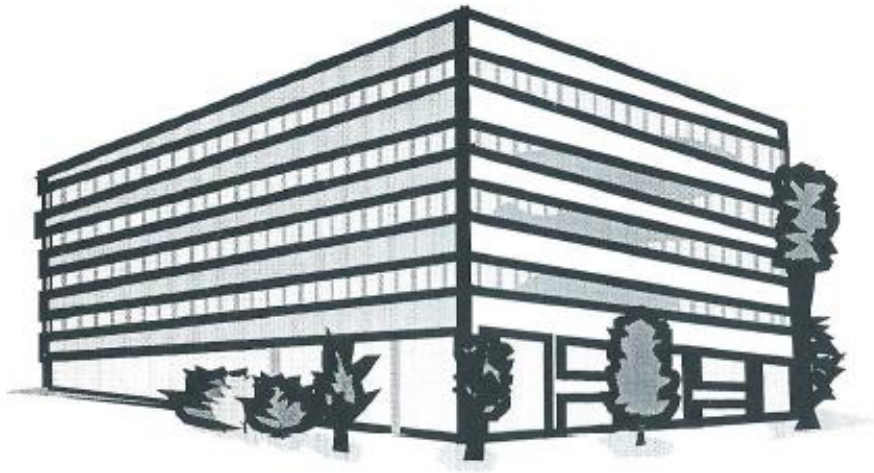
Can savings be withdrawn easily?

Yes, members can withdraw their savings after a small notice period provided that they are not pledged as security for a loan. However, members are encouraged to keep their savings intact to ensure a continued dividend and to maintain their capacity to borrow.

Are Credit Unions Insured?

Yes, they are insured against fraud, robbery and embezzlement – members' savings are, therefore, entirely safe.

WHAT FUTURE FOR THE UNIVERSITY'S MILTON CAMPUS SITE?



Many local residents will remember the reaction to the suggestion that the Milton Campus could be sold by the University as a site for a new supermarket. The planning application on that occasion failed but the site is surplus to the University's needs and is likely to go on the market again.

The City Planners have kindly agreed to come along to our next Forum and to hear from residents what they would prefer to see built on this site on the corner of Locksway Road and Milton Road.

The grounds have a large number of trees protected by Tree Preservation Orders and the buildings have a history of their own. Formerly the Portsmouth Teacher Training College, then part of the Portsmouth Polytechnic before passing to the University, the building has connections with Dorothy Dymond the famous Portsmouth historian so this may influence a decision to retain the existing main building and frontage which are a landmark in our area.

Come along to the meeting on **Wednesday 24 May** at 7.30 pm at the Milton Campus Lecture Hall, Locksway Road, and join in the discussion.

HERE COMES THE SUMMER!

***Milton Park 75th – July 1998
Were you there?***



***Millennium in the Parks
Will you come again on 13th August 2000?***

Free entertainment for all the family is under way as part of the Council leisure services summer Fun in the Parks initiative. Emphasis has been put on keeping children happy and occupied at special activities for under fives and eights organised by the City Ranger service.

Victoria Park, Milton Park and Anchorage Park are set to stage the three main community events.

Milton Park once again hosts arguably the biggest event from 11am to 5pm on Sunday August 13th, with music from the 60's to 90's, a parent and toddler children's area, local displays, bouncy castles, mini funfair, an inter-pub tug of war, sports development initiatives, story telling, the family library link bus, police crime prevention and fire engine.

Pompey players may also attend to sign autographs and carry out football coaching.

For more information, or other issues of concern about your parks, contact the rangers on 023 9287 7858

MILTON NEIGHBOURHOOD FORUM 4 NOVEMBER 1999

SUMMARY OF MINUTES

1. Introduction

The Chair welcomed those present and explained the reasons of change of date.

2. Changes to the Constitution

David Pointon explained the changes required to operate a bank account to raise funds for Milton Matters. The revision was accepted on a vote of 18 to 1.

3. Update from the Chair

Tree Preservation Orders – hope to be able to display a list of all TPO's on the Beddow Library.

Portsmouth University – Have met with the residents of Broom square to discuss the parking difficulties.

Community Initiatives – Of the 3 bids submitted only the Avenues Community Association was successful.

Access to St James – The Forum has become aware of changes to access to the St James Hospital Site. The Hospital intend to restrict through traffic, fence off the 'parkland' site and restrict public access to daylight hours. Two members of the Forum will be meeting hospital management on 17th November.

Review of The City Plan – In July, local community representatives and the Forum committee joined with the Planning Department to review the City Plan and identify local priorities.

Avenues Community Association Playscheme – Cilla Baxter.
The Community initiatives Fund has granted £5000 towards development of an informal play area on Milton Common. Further grants are sought from Portsmouth City Council green scheme and

Hampshire County Council. Ms Baxter and her committee were congratulated on their efforts.

St James Hospital Park Trust – Dr Caroline Scott

Dr Scott reported on an excellent and well supported conference entitled ‘Gardens of the Mind’ which focussed on the therapeutic value of the landscape to those in psychiatric care. The event included tours of the grounds and was reported by Southern T.V. and The News.

Dr Scott is still researching the use of the land by local people and anyone who can help with its history is requested to fill in a questionnaire.

4. Election of Secretary and Committee

Secretary – Hilary Collins elected unanimously

Committee – re-elected en bloc

Forum Rep – elected to the committee.

5. Changes to Ward Boundaries – John Haskell P.C.C.

Mr Haskell explained the Government directive and the Local Government Boundary Commission’s role in the review of Ward Boundaries to retain identities and interests of local communities while securing effective local government.

A local consultation initiative via Flagship yielded a 1% response across the city. One aim of the new boundaries is to encourage more people to vote. Each political party had their preference of three options and the commission will decide

Residents with a view must respond urgently, reports will be on display from January to March. New boundaries recommended will be applied from May 2001.

6. Milton Luncheon Club – Maria Wells

Maria and her colleague Kate gave an update on the Thursday Luncheon Club at the Langstone Campus.

It aims for students to ‘give something back’ to the community in which they live and also to help rebuild good relationships with the local residents.

7. Fratton Industrial Estate – Paul Newbold (City Planning Officer)

Mr Newbold presented an overview of the proposals for the Fratton Goods Yard site and the Outline Planning Application. Plans and a model are available for viewing in the Civic offices.

Areas of concern raised by the public.

1. Proximity of lorries to the west side of Frogmore Road residencies.
2. General noise levels
3. Lack of parking space for patrons
4. Inadequacy of Rodney Road with respect to current industrial premises
5. Relocation of Goldsmith Avenue lorry Park.
6. Why has the level of retail provision risen, Could there not be more housing on site? Mr Newbold explained the consultants views on the balance between the quantity of retail area and the necessary levels of investment.
7. Rail freight forwarding – design allows for lorry /rail interchange
8. Why can't the football stadium be located further west? Mr Newbold stated that this was the preferred option but Police advised against this for reasons of crowd control.
9. Questions on the volume of traffic in the area were dealt with by Paul Glover of the City Engineer's department and included a demonstration of the re-design of the Velder Avenue / Milton Road junction.

The meeting was closed at 9:00pm

Thanks to everyone who visited the Ward Boundaries display in the Library and who took the trouble to write in with their views which were passed on to the Local Government Boundaries Commission.

WHAT DOES E-GOVERNMENT MEAN TO YOU?

The Government has ambitious plans for almost all its information to be available on-line through the internet by 2005. It expects local authorities to move in this direction too. The possibilities for you include

- Viewing information
- Viewing Planning applications from your home computer
- Completing official forms on-line to save visiting offices or requesting a form and filling it in and mailing it
- Interrogating local sites for bus times, train times, etc



You are invited to come along on **Wednesday 24th May** and hear from Adam Reeves, part of the Council's Strategy Team, what kind of information it should be possible to make available 'on line' and he would like to hear from you whether this will meet your needs.

It may be that you would rather be able to call a Council helpline in the evenings and get advice instead of working through a computer.

You may not be in a position to buy a computer. Adam will tell you where you can get access now – through your local Library – and what the Council is planning to do in the future if there is the demand for these extra services.

Drug Action Co-ordinating Group

The Drug Action Co-ordinating Group is conducting a survey on the issue of street drinking and the public perception of it.

A member of the Co-ordinating Group will be giving a short presentation after which the forum will break up into small groups, each with a facilitator, for discussion (subject to numbers present on the 24th May).

Rather than focus just on street drinking they would like to widen the topic out to include all related issues.

This workshop will follow a similar format to that taken by the 2020 Vision team earlier last year.

* * * * *

Milton Piece Allotments

The Forum has been in contact with Hampshire Wildlife Trust in Eastleigh – regarding the creation of a hedge along the waters edge of the Milton Piece Allotments.

Claire Taylor their Urban Wild Life Officer confirmed that discussions were taking place with Roger Young regarding the type of hedge to be planted and the most suitable planting time. Claire was concerned that it was already too late to plant this spring and thought that it would now be in the autumn.

The main objective of the hedge is to protect and promote the wild life in the area, and to improve the security of the allotments that had recently been broken into.

It is also hoped that we can arrange for Claire to attend one of our future Forum meetings and give a half hour presentation on a related topic such as ‘Gardening for Wildlife’ or ‘A Corner for Nature’

WE ARE SURVIVORS!

For those born before 1940

We were born before television, polio shots, frozen food, plastic contact lenses, videos, Frisbees and the pill. We were before radar, credit cards, split atoms, laser beams and ballpoint pens:- before dishwashers, tumble dryers, electric blankets, air conditioners, drip-dry clothes and before man walked on the moon.

We got married first and then lived together. We thought 'fast food' was what you ate in a restaurant; a 'Big Mac' was an oversized raincoat and 'crumpet' was what we ate for tea. We existed before 'house husbands', computer dating, careers and when a 'meaningful relationship' meant getting along with your cousins, and 'sheltered accommodation' was where you waited for a bus!

We were before day care centres, group homes and disposable nappies. We never heard of FM radio, tape decks, electric typewriters, artificial hearts, word processors; a chip was a piece of fried potato, 'hardware' meant nuts and bolts and 'software' wasn't a word at all.

Before 1940 'made in Japan' meant junk, the term 'making out' referred to how you did your exams, 'stud' was something that fastened a collar to a shirt and 'going all the way' meant staying on a bus until you reached the bus depot. Pizzas, McDonalds and instant coffee were unheard of. In our day cigarette smoking was fashionable, 'grass' was mown, 'coke' was kept in the coalhouse; a 'joint' was a piece of meat you had on Sundays and 'pot' was something you cooked in. 'Rock music' was Granny's lullaby. 'Eldorado' was an ice cream, a 'gay' person was the life and soul of a party and nothing more, while 'aids' just meant beauty treatment or help for someone in trouble.

We who were born before 1940 must be a hardy bunch when you think of the way in which the world has changed and the adjustments we have had to make. No wonder we are so confused and there is a generation gap today BUT by the grace of God WE have survived.

Spare a thought for those who follow us. Their pace of change will be even greater. They may reflect nostalgically that they 'saw in' the Millennium, became 'web-enabled', traded and socialised on the net, and communicated via a WAP all in the same year!

Courtesy of BBC Southern Counties Radio

MILTON NEIGHBOURHOOD FORUM

CHAIRWOMAN

Mrs J Burkinshaw
202 Moorings Way
Milton PO4 8YN

VICECHAIRMAN

Mr K Rowlands
28A Priory Crescent
Milton PO4 8RN

SECRETARY

Ms H Collins -
co Neighbourhood Forums Office
P.C.C.

LEAD OFFICER

Mr D Pointon
Procurement Services
Civic Offices
Guildhall Square PO1 2BJ

EDITORIAL TEAM

Mrs J Burkinshaw

Mr K Rowlands

Mr D Papanicolaou

Mr J Couch

Ms H Collins

FORUM REPRESENTATIVES

Mr R Brown
259 Locksway Road
Milton PO4 8JN

Mr P Mills
28 Morgan Road
Milton PO4 8JS

Mr M C Hiscock
1 Sovereign Drive
Milton PO4 8XX

Mrs L Mills
28 Morgan Road
PO4 8JS

Mr D Papanicolaou
11 Apsley Road
Milton PO4 8RH

Mrs O Ilsley
61 Kingsley Road
Milton PO4 8HL

Mr J Couch
14 Vernon Ave
Milton PO4 8SA

Mr C Bacon
2 Milton Park Avenue
Milton PO4 8JJ

Ms P Sawyer
123 Mayles Road
Milton PO4 8NR

Mrs P Priest
10 Broom Square
Milton PO4 8LP

Mr D Wilcox
31 Broom Square
Milton PO4 8LP

Mrs Oastler
35 Shelford Road
Milton PO4 8NU

Mrs P Partridge
103 Goldsmith Ave
Milton PO4 8DT

Mrs R. Flewitt
7 Mayles Road
Milton PO4 8NP

Miss J Redman
13 Velder Avenue
Milton PO4 8RT

Freepost Address
Neighbourhood Forums
Portsmouth City Council
FREEPOST (SCE 4514)
Portsmouth PO1 2YZ

Mr R Isley
61 Kingsley Road
Milton PO4 8HL

Please Contact
Any Forum Rep or Ward Cllr
for More
Information or Assistance