

# MILTON MATTERS

Issue No 69

Milton Neighbourhood Forum

February 2020



Milton Village Community Association Members enjoy New Year's Eve in Torquay (*Photo Bob Nevatte*)

## HAPPY 2020 TO ALL IN MILTON FORUM AREA

**Wednesday 26 February 7.00 pm**

**Mary Rose School, Gisors Road, off Locksway Road**

### **NEXT FORUM AGENDA**

**Repair Shop Information**

**Safer Portsmouth – Your Views Needed – Nicola Waterman**

**St James Phase 2 Developer's Plans**

## **OPEN FORUM MINUTES Oct 2019**

The Chair opened the meeting and updated residents on a number of upcoming events.

### **TREASURER'S REPORT**

In the absence of the Treasurer, the Chair confirmed that the Picnic on the Green held in June was successful, the accounts are in order and a bank reconciliation has been finalized.

### **PROPOSALS FOR NEW CARE HOME ON SITE OF FOREST LODGE**

**Alistair Wood** from L.N.T. Construction spoke about the application to the City Council to provide a 3-storey new care home on the site of the existing Forest Lodge. He stated that the proposal is for a 66-bed home which will cater for nursing, elderly care and dementia care needs and the new build has been designed to be in keeping with the style of local homes in Locksway Road. Some trees will need to be felled, but many trees will be retained to provide a rural feel, especially perimeter ones.

He stated there should be a low level traffic impact and the design will be geared to sustainability, with under floor heating which will serve as a cool-air scheme in warm weather, plus low-energy lighting.

Between 50 and 60 new jobs should be created (whole time equivalents, and the home will be managed by the Royal Naval Benevolent Trust (RNBT).

**Rob Bosshardt**, Chief Executive of the RNBT confirmed that the new home will be exclusively for Naval beneficiaries – this may release vacancies in other homes across the City for local residents needing care.

The plans could be considered on 4<sup>th</sup> December 2019 by the Planning Committee (earliest committee date): the reference for residents who may wish to view plans and submit comment is **19/01322/FUL** **Nb the scheme is still available for comment and a decision will be made shortly.**

### **NEIGHBOURHOOD PLAN AND AIR QUALITY ISSUES**

#### **Neighbourhood Plan -Rod Bailey**

Chair of the Milton Neighbourhood Planning Group, spoke about the slow progress of the neighbourhood plan as there had been a need for certain amendments to be made. The plan has required various statements from interested agencies to be obtained, including air pollution data and sustainability details. Funding has been provided for processing the plan, but the “goalposts” for claiming funding seem to keep moving and the planning group have been busy dealing with the detail.

Rod identified that there is a potential deficit of 400 school places, which could be alleviated if appropriate school places could be provided in Milton.

A forum committee member stated that the Forum Planning Group has put in a lot of hard work to get to the current stage of the neighbourhood plan and the group should be congratulated. This being the AGM All existing members of the Neighbourhood Planning Group were unanimously re-elected to serve for a further term and thanked.

## **AIR QUALITY ISSUES**

**Rod Bailey and Cllr Darren Sanders** fronted the air quality topic in the absence of Hayley Trower, who has supplied some notes for use at the public forum meeting. Recognition of air quality problems has been slow by central government, and environmental campaign group “Client Earth” was successful in a legal challenge against central government for failing to deliver action to achieve compliance with legal limits for nitrogen dioxide. Portsmouth City Council has been issued with a Ministerial Direction requiring an Air Quality Local Plan to be devised, detailing measures to be implemented to improve air quality in Portsmouth in the shortest possible time.

The City Council is working with air quality consultants Aecom and transport consultants Atkins to develop an Air Quality Local Plan. Transport and air quality modelling work has been undertaken to assist with developing measures to effectively achieve compliance in the shortest possible time. Two locations where high concentrations of nitrogen dioxide are present have been identified – A3 Alfred Road (Unicorn Road to Queen Street) and A3 Commercial Road.

Possible solutions to problems have been debated including: asking central government to require buses and taxis to be made compliant and charging.

The proposed City Council Air Quality Local Plan will be submitted to Government’s Joint Air Quality Unit in the form of an Outline Business Case by 31 Oct. 2019, after which public consultation will take place to seek wider views,

Visit [www.portsmouth.gov.uk](http://www.portsmouth.gov.uk) and search “air quality” for further information.

**AQUIND Cllr Darren Sanders** updated residents on issues regarding the government’s approval of a scheme for running cables through Portsmouth for Aquind’s installation of an electrical interconnector at Lovedean. The City Council has voiced concerns over the impact that Aquind’s cable works will have on roads across the western are of the City and resultant disruption..

## **OTHER MATTERS**

A resident has produced a petition setting out the need for improvements to the beach at Eastney to facilitate better access for disabled persons. Residents are welcome to support the petition by signing if they so wish.

Leaflets were made available for residents to complete if they wish to support a plan to identify current and past access to St. James’ Hospital grounds as a **right of way as** grounds have been routinely used for many years by residents and this should be maintained in future in the light of planned development at the Hospital.

There being no further business, the meeting closed at 2100 hours

**YOUR LOCAL FAMILY LAW SOLICITOR**



**RUTHERFORD SOLICITORS**



**257 MILTON ROAD**

**PORTSMOUTH PO4 8PQ**

**Tel: 02392 735700**

**[www.rutherfordsolicitors.co.uk](http://www.rutherfordsolicitors.co.uk)**

**VERY COMPETITIVE FIXED FEE OPTIONS**  
**LEGAL AID AVAILABLE**

WE OFFER **LEGAL AID** ADVICE IN FAMILY LAW INCLUDING CHILDREN, CARE PROCEEDINGS, DOMESTIC VIOLENCE, DIVORCE, FINANCIAL MATTERS ETC. ***THEREFORE IF YOU ARE ELIGIBLE YOU MAY QUALIFY FOR FREE LEGAL ADVICE***

**WE'RE OFFERING A SUBSTANTIAL REDUCTION ON THE PRICE OF WILLS AND LASTING POWER OF ATTORNEYS FROM 1.02.20 – 31.03.20 (T&C's apply)**

Straightforward Individual Will: **£129 + vat (usual price £165 + vat)**

Straightforward Joint/Mirror Will **£199 +vat**

**(usual price £265 +vat)**

Offer on Lasting Power of Attorney - **£180 +vat**

(excludes registration and OPG fee) – (usual price £350 +vat)

Please telephone us or call in to the office for further details.

# MILTON VILLAGE TRAVEL CLUB HISTORY



**“Where did you spend New Year?”**

**“I had a fabulous time in Torquay with the Milton Village Community Association. They have a Travel Club for members run by Allison Udy”.**

**“That sounds different. How did it begin?”**

Let's ask Allison herself..... “I started at the centre in 1993 when it was a split site between a school hut in the grounds of Meon school (now Jack & Jill Preschool) and Milton Village Hall which had just opened and had one small hall and a meeting room and a couple of groups hiring. There wasn't much to offer local residents and soon after I started it was Councillor John Walters who suggested I arranged a trip to Gales Brewery in Horndean for committee and any local residents interested. I hadn't a clue what I was doing but somehow got about 30 people on a coach to the brewery and having enjoyed a tour and, particularly the tastings, it was deemed a success.

There was a gap of perhaps 10-12 months while I set up the office and systems at MVH and got more groups in. I then looked at developing a membership scheme and decided to lay on a few day trips to attract interest. We then started leafleting every household and recruiting interest in the Meon school play grounds where my boys attended. For a couple more years we arranged a few daytrips each year, mostly to theme parks, markets and cities which were very well supported. It wasn't until 1997 that I arranged my first overnight trip which also happened to be the first trip abroad - Disneyland, Paris which was a roaring success and we've done that trip every year since!

In the early days the core regulars were families but gradually we started to broaden the range to attract all ages and as the young families grew up, the demographic changed to more older people becoming interested and eventually a strong core of adults & seniors emerged and



became regulars many of whom still come away with us today! But, now I also find that the children of the early days are now bringing their children on the trips, especially true for the Disney! As more and more people joined, more ideas were needed and we would ask regularly what people wanted to do and where to go and we became quite adventurous and have enjoyed

holidays to Iceland, USA, Canada, Egypt (Nile Cruise), Scandinavia and most of Europe!



## MILTON VILLAGE TRAVEL CLUB..

Initially, Portsmouth City Council weren't very supportive as it was quite unconventional for a community centre to arrange trips and wouldn't financially support any promotion or expenditure incurred in arranging them but eventually they began to see the benefits they were providing - bringing people together, making friendships, enabling low income families and perhaps singles and couples who were anxious about going on a day trip or holiday on their own to enjoy social activities at very reasonable cost. The purpose was never to make money but provide a social service. However, when we relinquished Shelford Road Hall site in the early 2000s MVH wasn't big enough to sustain finances and so the trips then became an essential part of the centre's fundraising activities to keep MVH open until we had the lovely new hall and coffee shop built in 2012. Overall, even though we keep the costs as low as possible, the trips provide a contribution to the running of the centre.

The last 7-8 years have seen phenomenal growth in membership and interest so much so that in 2016 we had to restrict new membership to those in our area of benefit to cope with the numbers but we do review this regularly. Kimberly has been a godsend in helping with the trips and hopefully in time we can increase her hours and, in turn, open up the membership again."

**Thank you Allison and the Centre Committee for giving us so many new experiences over 27 happy years. Please keep it going!**



# Milton Village Community Association

Milton Village Hall, 182 Milton Road, Southsea, Hants, PO4 8PR

Tel. 023 9287 3788 Email: [miltonvillagehall@gmail.com](mailto:miltonvillagehall@gmail.com)

Office: 9.30am-12.30pm Mon-Fri Website:

[www.miltonvillagehall.co.uk](http://www.miltonvillagehall.co.uk)

## MEMBERSHIP 2019-2020 and 2020-2021

If you receive Milton Matters, you can become a member of our Association! You do not have to be a member to enjoy any of the activities and trips but if you do join, you **can book on to trips & events at members' prices at any time!** (Subject to availability)

The membership year runs 1<sup>st</sup> September to 31 August and membership costs just £7.50pp per year (or part year in the first year) and entitles you to discounts on private hall hire, priority booking (for following programmes) & cheaper prices for trips/events and special offers/discounts in Pure Ground Coffee Shop! A sample of existing and proposed trips is below. Please pick up the new newsletter – available from March 2020.

### UPCOMING TRIPS/HOLIDAYS

### FUTURE POTENTIAL TRIPS

<b>3-7 Feb – Warner Lakeside</b>	<b>Boston, USA</b>
<b>Wed 18 Mar – Pretty Woman (London Show)</b>	<b>Torquay</b>
<b>Tues 21 April – King &amp; I (Mayflower)</b>	<b>Disneyland Paris</b>
<b>3-9 May – Ireland</b>	<b>Houses of Parliament</b>
<b>Wed 19 Aug – Sister Act (London Show)</b>	<b>Pantomime</b>
<b>21-24 Aug – Rouen &amp; Honfleur</b>	<b>China</b>
<b>Wed 7 Oct – Pretty Woman (London Show)</b>	<b>Day trips around the UK</b>

## CURRENT REGULAR ACTIVITIES at Milton Village Hall (Red = New)

Monday	Tuesday	Wednesday	Thursday	Friday	Sat	Sun
Music Mad	Music Mad	Music Mad	Weight Watchers	Yoga	AS Tots Soccer	Keep Fit
Little StepsGym	Scrap-Booking (m)	Bingo n Brunch (m)	Little Steps Gym	Cribbage Club	Little StepsGym	AA
Tai Chi	Coffee Morning	50+ Keep Fit	Tots Soccer	DesignMake Create		
Adult Crafts (m)	Advanced Cribbage	Little Steps Gym	Quiz Time (m)	Beginners Line Dance		Light House
Curling	Beetle Drive (m)	Breve Easy Choir	Pilates	Yoga		Church
Zumba	Trading Cards Club	Aerobics	Zumba	AP Performers	Improv Comedy (m)	
Tap Dance	Yoga		Line Dancing			
			Strong by Zumba			



Like us on Facebook for latest news & info!



# LAWSON ROSE

**Are you considering a move?**

**Why not get in contact with your  
local Estate Agent, Lawson Rose.**

**Property specialists Chris and Liam will be  
delighted to hear from you. For a **Free**, no  
obligations valuation of your home, give the  
team a call – **02392 367 779****

**contactus@lawsonrose.com  
www.lawsonrose .com – 131 Winter Road,  
Southsea, PO4 8DS**





HAIR LOUNGE



261 - 263 MILTON ROAD . PORTSMOUTH  
SOUTHSEA . HAMPSHIRE PO48PQ

ESCAPE

NEW CLIENTS WILL  
RECEIVE A  
**30%**  
DISCOUNT!



T: 023 9283 3999



## Angus Tree Services

Tree pruning  
Tree reductions  
Tree felling  
TPO & conservation area work  
Hedge cutting  
Stump grinding  
Land clearing

LANTRA approved  
Fully insured  
Free estimates  
All areas covered  
Eco friendly equipment  
Waste disposal  
Friendly, efficient service

07775 764669 bob@angustreeservices.co.uk

For all your arboricultural needs Call Bob for your free quotation

## MILTON'S OWN HEDGEHOG RESCUER



### **Portsmouth woman receives national award for her work rescuing and rehabilitating hedgehogs**

**A**nimal lover Linda Hewett, 54, from Portsmouth, has always been passionate about the care and protection of animals. It was after reading about the decline in hedgehog populations in the UK and the threat they face from habitat loss that Linda decided she wanted to help.

In 2011, Linda and her mother Pamela set up Bert's Hedgehog Retreat, a not-for-profit hedgehog rescue centre in the heart of Portsmouth. The centre

specialises in rescuing and rehabilitating hedgehogs before releasing them back into the wild.

Alongside working for Portsmouth City Council and at a residential care home, each year Linda takes in more than 150 injured hedgehogs. She often works around the clock to hand-rear baby hedgehogs that require feeding every three hours, and tends to hedgehogs that need specialist treatment.

Linda also knows that hedgehog populations are primarily threatened by loss of habitat. She works tirelessly to educate the public on ways they can help create environments where hedgehogs can thrive, giving up her time to talk at local community centres and colleges. Linda also spearheads all of Bert's Hedgehog Retreat's fundraising, hosting events through the year to raise vital funds needed to care for their hedgehogs.

## MILTON'S OWN HEDGEHOG RESCUER

Linda said: "I have always been passionate about protecting wildlife, and when I read about the shocking decline in hedgehog populations in the UK, I knew I had to help. I founded Bert's Hedgehog Retreat eight years ago with just four hedgehogs; by the end of the year I had 42 hedgehogs in my care! Since then I've rescued hundreds of hedgehogs - and I absolutely love it!"

Since we've set up our rescue centre, I've also been able to visit schools and colleges around Portsmouth to educate children about this iconic animal and how they can be better guardians for their future. This is something that's very important to me and I hope I can encourage the next generation to take action before it's too late."

James Sawyer, UK Director of IFAW, said: "Linda's dedication to protecting one of Britain's best loved animals is inspiring. We were also thrilled to see her commitment to working with the local community on ways they can safeguard hedgehog populations for future generations. We think that her work will serve as an inspiration for others. We are pleased to give Linda IFAW's Hedgehog Rescue Award."



Linda received her award at IFAW's prestigious Animal Action Awards event, presented by TV wildlife presenter Bill Oddie at the House of Lords on October 15.

**LINDA AND HER MUM  
PAMELA ALWAYS COME TO  
THE NEIGHBOURHOOD  
FORUM'S PICNIC ON THE  
GREEN AT ST JAMES  
FIELD. DON'T MISS THEM  
THIS YEAR ON**

**SATURDAY 6 JUNE**

**WHEN WE SHALL HAVE ALL  
THE USUAL FUN STALLS**

## **'Little America' US Army Base Hospital No.33 St James**

**A**t the outbreak of World War One the US had adopted a position of neutrality but as the war ground on, public opinion swung behind the allies. In 1917 in a make or break attempt to end the stalemate German U-boats began sinking neutral shipping and on April 6, 1917. President Woodrow Wilson declared war on Germany.

### ***Main Gates***

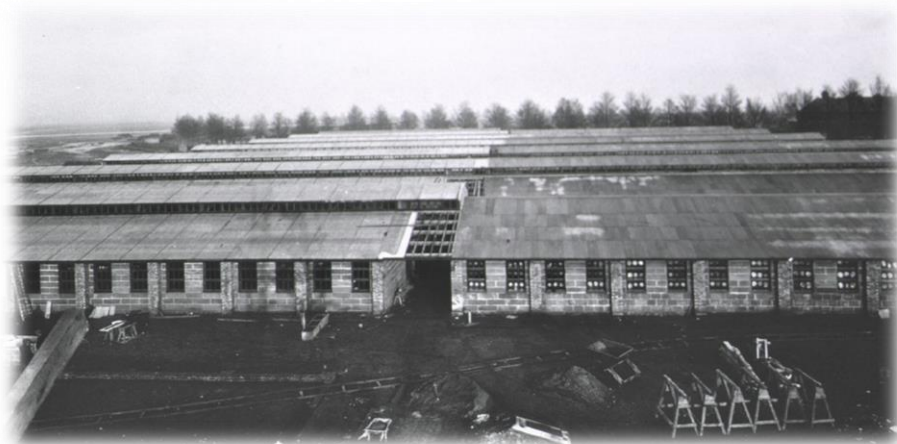


The first American troops arrived in France in June, and on the 4<sup>th</sup> of July the 1<sup>st</sup> Expeditionary Division ('The Big Red One') paraded the Paris streets to provide a timely boost to flagging French morale. Here in Portsmouth 10,000 people celebrated Independence Day outside the Guildhall at an event organised by Mayor Harold R. Pink. A decade earlier he had one of the villas named in his honour.

The German Spring Offensive of 1918 was predicated on defeating the allies before the Americans could fully engage their forces. Whilst the offensive brought the Germans to within 40 miles of Paris it was to prove a Pyrrhic victory. By June 1918 American forces were arriving at the rate of 10,000 a day.

In tandem with this huge build up, a group of Doctors and Nurses from New York's Albany Hospital were formed into Base Hospital No.33. After months of training they arrived at the American Expeditionary Force (AEF) rest camp on Winnall Down Winchester. From there they were attached to the Southern General Hospital Fawcett Road section before arriving at Portsmouth Borough Asylum which was in greater readiness for immediate use on July 8<sup>th</sup> 1918.

## **'Little America' US Army Base Hospital No.33 St James**



### ***Construction of Wards***

From contemporary accounts St James was “One of the most splendid and comfortable of the big American hospitals in England. It had a civilian capacity of 1,000 patients. It was turned into a home from home for the invalided troops. The more fortunate could garden, read and play sport on the site. It was said that the Cricket pitch hosted the finest Baseball Diamond in the whole country.

American troops gained their first victory of the war in May rolling back the German salient at Cantigny, but their troops lacked the experience of the French and British forces and they sustained heavy casualties. Through the summer wounded US soldiers were housed under canvas whilst the construction of 70 additional wards on the hospital's fields continued apace.

On 5 August 1918, the Chief Surgeon, A.E.F, designated Base Hospital No. 33 a special hospital for patients suffering from war neurosis; 160 of these cases were handled by the unit. The highest census of sick and wounded was registered on 17 November, when 1,586 were being cared for. From 24 July to 31 December 1918, Base Hospital No. 33 treated 1,782 medical and 1,765 surgical cases.

This seemingly inexhaustible supply of American manpower was psychologically decisive, and the Germans approached the US for peace terms in early October. Finally, at the 11<sup>th</sup> hour of the 11<sup>th</sup> month the guns fell silent and Americans in Portsmouth celebrated alongside citizens as peace was greeted with excitement and relief.

*Cont...*



## 'Little America' US Army Base Hospital No.33 St James

As quickly as they had arrived the Americans had gone. The hospital was decommissioned and all staff had left the city by January 1919.

**When walking in the grounds one is literally walking in the footsteps of heroes.**



### ***Three buddies out for a walk***

For a wider context of US in Portsmouth during World War One - 'Over Here' Ross Wilson University of Nottingham. Images courtesy of the US National Library of Medicine.

## **J. G. RILEY**

NEWSAGENT-TOBACCONIST-CONFECTIONERY-GREETING CARDS-STATIONERY

**Prop. R.D. Culverwell - Member of The National Federation of Retail Newsagents.**



### **GREETING CARD SPECIALIST**



**Mr News .....**

*The sign of service at your  
Local Independent Newsagent.*

90 Locksway Road  
Milton

Telephone 023 92731574  
Email [rileynews@virginmedia.com](mailto:rileynews@virginmedia.com)  
Webbsite [www.rileynews.co.uk](http://www.rileynews.co.uk)



# HAVE YOUR SAY

## ON HOW WE SPEND THE COMMUNITY CRIME REDUCTION FUND

THE MILTON WORKSHOP WILL  
BRING THE COMMUNITY  
TOGETHER TO CREATE NEW  
IDEAS FOR MAKING YOUR  
COMMUNITY SAFER

### When & Where

Milton Neighbourhood Forum

Mary Rose School

Wednesday 26 February, 19:00

For more information visit:

[www.saferportsmouth.org.uk/have-your-say-on-building-a-safer-portsmouth/](http://www.saferportsmouth.org.uk/have-your-say-on-building-a-safer-portsmouth/)

Or contact Nicola Waterman on 07879 811760

### Welcome to Building Safer Communities!

The Building Safer Communities workshops have been set up because we want to hear from you – residents, community groups, schools, businesses – about how the council should invest **your** money to reduce crime and anti-social behaviour and make **your** community safer.

Through participating in your local workshop, you'll have the opportunity to share your own experiences of crime and anti-social behaviour, identify the priorities for your area, and come up with ideas for how to make your community safer. The best initiatives will be put into practice using the Community Crime Reduction fund, a pot of money totalling £90,000. Each area of the city – the north, centre and south of Portsmouth – will receive a total investment of £30,000 (£10,000 a year for three years) in the initiatives you come up with to reduce crime and anti-social behaviour in your community. I look forward to welcoming you to the Milton Workshop and hearing your ideas. **Cllr Lee Hunt. Cabinet Member for Community Safety**



### KEY ISSUES

Research by the Safer Portsmouth Partnership (SPP) has identified four main areas of concern about crime and safety in the city:

- Young people at risk of exploitation
- Domestic Violence
- Substance Misuse
- Anti-Social Behaviour (ASB)



For more information  
about  
the Safer Portsmouth  
Partnership

<https://www.saferportsmouth.org.uk>  
[@saferportsmouth](https://twitter.com/saferportsmouth)  
[#bscportsmouth](https://www.facebook.com/bscportsmouth)

# BOXALLS BATHROOM CENTRE

*Creating beautiful bathrooms for over 50 years!*

Supplying to the Public & Trade offering great value for money and expert advice on everything for the bathroom!

- 14,000 sq.ft. of Bathrooms
- Bathroom Furniture Specialists
- 400 Suites in Stock
- Instore Planning Service
- Over 60 Displays including many elegant en-suite settings
- Customer Parking
- A family owned, independent business



A Showroom you will like – prices you will love!

**Do visit us, you won't be disappointed**

**Open: Mon.-Thurs. 9am-6pm: Fri. 9am-6pm: Sat. 9am-5.30pm**

**139-145 Copnor Road, Portsmouth, PO3 5BS**

**Tel: 02392 694106 [www.boxalls.co.uk](http://www.boxalls.co.uk)**



76 Locksway Road, Milton, PO4 8JP

Tel: 02392 756399

Traditional family run Fish & Chip Shop

All our food is freshly cooked to order

**DELIVERIES:- 1 ½ mile radius of shop**

Lunchtime 11.30am – 2.00pm (£5.00 Minimum)

Evenings Tuesday & Wednesday 5.00pm – 8.00pm (£10.00 minimum)

[Facebook.com/crispycodportsmouth](https://www.facebook.com/crispycodportsmouth)

Please visit our Facebook page for our full Menu and Special offers



[www.pingzone.co.uk](http://www.pingzone.co.uk)



PC and Laptop repairs



Is your machine running slow?



Mobile phone and tablet screen repairs



Upgrades



Networking



Virus and Malware protection

Please contact Dave if you need any help.



02393 593 393



07944 917 293



[support@pingzone.co.uk](mailto:support@pingzone.co.uk)



14 Tern Walk, Milton, PO4 8QG - by appointment please

## CAN WE FIX IT? Reducing Waste at Repair Cafe



The doors first opened to this monthly event, in March 2018 and since then, the volunteers have seen 874 items, and managed to fix 69% of them! People bring in their broken jewellery, bikes, toasters, kettles, hoovers, computers (including for software advice), suitcases, clothes, toys and more.

Clare Seek, Portsmouth's founder, is now helping others set up Repair Cafés in different parts of the city, with the hope that every neighbourhood can have one close at hand; to connect those with broken items, with those knowledgeable in repair, so they can pass on skills. Is there room for a Repair Café in Milton?

The idea started in Amsterdam in 2009 and there are now over 1,500 groups around the world. Clare Seek says that as well as environmental benefits and building community, there are many people that visit with items that hold sentimental value, "As new life is breathed into much-loved toys; ornaments that people remember seeing in their grandparents' homes; and favourite jumpers have coordinating patches added to cover holes, the joy for the repairers and the visitors is visible. As money is tight for many in our city, simple things like keeping kettles working longer, and getting bikes working is essential."

The event is held on the 3<sup>rd</sup> Saturday of each month at Buckland URC on Queens Road in Fratton, between 10.30am & 1pm, and visitors log their items as they enter, and chat and enjoy cups of tea whilst they wait for repairers to be free. They then sit with the repairers and learn more about their item and how to repair it, so that in future they can sort more things themselves and pass on skills to others. Every time something is fixed, a small bell is rung, so that everyone can celebrate. The event is funded by donations from those that attend. "It would be great to see one of these events in Milton and other neighbourhoods, running on different Saturdays, so that there can be a network of them across the city." says Clare.

If you'd be interested in being part of a team to explore the idea in Milton, get in touch with Clare on [repaircafeposmouth@gmail.com](mailto:repaircafeposmouth@gmail.com) or visit [www.repaircafeposmouth.org.uk](http://www.repaircafeposmouth.org.uk) to find out more about Repair Cafés.

## FAREWELL TO CAROLINE



**O**n 17 January Dr Caroline Scott passed away. A marine biologist by profession, Caroline held a deep love of the environment and campaigned strongly for the preservation of everything natural in our part of Portsmouth.

We all came to know her well through the battle to save part of St James Hospital from developers. She worked tirelessly with a group of local residents to register the now St James Field as a village green and managed to engage a sympathetic local solicitor John Saulet to take the case without cost. In a letter of March 2001, he stated “an advocate is only as good as the client who instructs him. I have received a very considerable amount of help from you in presenting this case and my thanks to you must be publicly recorded and acknowledged”

It was a hugely demanding project and we can see the evidence of her hard work and diligence in the access we now have to St James Field, which is protected into the future by being designated as Public Open Space and the home of our annual Picnic on the Green. It was Caroline’s concept that this annual event should support cohesion in our community, present traditional activities such as children’s races and be a happy meeting point on a valuable local site which we had fought for.

Do you recall the day when she and supporters of the then Milton Action Group protested in Locksway Road against building an Asda supermarket on the site of Foster Hall training college? There was traffic chaos that day as local residents took to the streets by car to register their objection resulting in Portsmouth FC’s match being delayed by 45 minutes and the planning application being refused.

Caroline served as a local councillor for Milton ward with responsibility as Chair of Planning Committee and upon her retirement was made an Honorary Alderman of the City. She has achieved a great deal in her life. She will be long remembered for what she has given us here – a conviction that people power can have an effect – and has been an inspiration to others to carry forward the wish to retain Milton as a green and biodiverse area. We must not forget her name. *Chair*



## GUIDE TO LOCAL SERVICES IN MILTON



**MOTOTECH – Unit 8, Warren Avenue Industrial Estate**

For all your mechanical requirements MOT's and recoveries available. **Tel: 023 9287 4784**  
Specialists in Performance and Luxury Cars

**BJM UPHOLSTERY LTD**  
**107 Guildford Road, Fratton**  
**Tel: 02392 822642**

**Foam cut to size, cushions filled, also re-upholstery**



**ART & FRAMING, 265 Milton Road,**

**[info@artandframing.net](mailto:info@artandframing.net)**

**Open Mon – Sat. 10am – 4pm. Closed Wednesday**



**BICKERTON**  
**ELECTRICAL SERVICES**

**Domestic & Commercial**  
**Electrical Services**

**Tom Bickerton M:07881 364582 H:0239 378 4551**  
**Email [hello@bestportsmouth.co.uk](mailto:hello@bestportsmouth.co.uk) [www.besportsmouth.co.uk](http://www.besportsmouth.co.uk)**



*Organic Natural  
Health & Beauty*

**CHERRY ORCHID BEAUTY- NEALS YARD  
REMEDIES ORGANICS**

**Consultant Beauty/Massage Therapist-  
AMY 07530 000821**

**Mobile/Home Based Milton, Southsea**

**Offering Gel II, OPI, Neals Yard, Manicures, Pedicures,  
Callus Peels, Facials, Threading, Tinting, Lash Lifts,**

**Waxing, Reflexology, Henna brows, Indian Head, Neals Yard Facials,  
Pregnancy, Hot Stones, Massage, Swedish, Aromatherapy Massage.**

**Experienced & Qualified visit [www.cherryorchidbeauty.co.uk](http://www.cherryorchidbeauty.co.uk) or**

**Facebook cherry orchid beauty**

**ADVERTISING RATES Contact Pam Pritchard (07837 929385) 02392 794966.**

**Full page £100. Half page £50. Directory entry £15.**

**for your next advertisement [pampritchard1@outlook.com](mailto:pampritchard1@outlook.com)**



## GUIDE TO LOCAL SERVICES IN MILTON

**THE JOHN DOYLE PARTNERSHIP** – Accountancy Services  
Marian House, 62-64 Priory Crescent. Tel/Fax:023 9261 0450  
Payroll and accountancy services for small businesses, sole traders, partnerships and limited companies.

Contact Kevin Doyle

[www.thejohndoylepartnership.com](http://www.thejohndoylepartnership.com) e-mail

[info@thejohndoylepartnership.com](mailto:info@thejohndoylepartnership.com)



**Prints and original paintings of Milton, Eastney and Portsmouth by local artist John Pearson. Visit [www.johnpearsonartist.co.uk](http://www.johnpearsonartist.co.uk) phone 02392 828998**



***IT'S A DOG'S LIFE – professional dog grooming salon based in Milton Call Sarah – 07716 124932.***

***All dog grooming services provided in a purpose built grooming salon on a one-to-one basis.***

***Only your dog is in the salon at that time.***

***City & Guilds trained groomer. Home dog boarding also available***

### DIPEST PEST CONTROL LIMITED

**All types of pest eliminated – No more than £50**

**Mr Simon Houghton MD, MRIPH, IMIFM, MBPR( Pest Control)  
Field Biologist**

**Hope House, 19 Revenge Close, Southsea, PO4 8YE**

**PHONE (023)9235 8692 MOBILE 07748 791 248**

**[dipestpestcontrol@ntlworld.com](mailto:dipestpestcontrol@ntlworld.com)**



**FOREVER BEAUTY 07860 547260**  
**Offering professional nails, brows & lashes in your area at**  
**Loft 24, 139-141 Goldsmith Avenue**

 [www.facebook.com/ForeverBeautyAB](https://www.facebook.com/ForeverBeautyAB)

 [ForeverBeautyAB](https://www.instagram.com/ForeverBeautyAB)

## FORUM AREA ISSUES



Clare Seek will be coming along to the next Open Forum on Wed. 26 February to explain how the Repair Café system works and to promote such an effort for the Milton Area. Do please come along if you are retired and frustrated at not having anything to do or are able to see how things can be repaired, or follow a trade. We would love to hear from you on that evening.

We shall have information on Phase 2 of St James planning application at Forum.

## Eastney Community Centre Easter Family Events

Thanks to generosity of the Lord Mayor's Charity Appeal we have received funding for the following **FREE** events over the Easter holidays at Eastney -

### KIDS EASTER-THEMED CRAFT SESSIONS (**Booking Essential**) \*

For children aged 5 to 11 accompanied by an adult.

**Tuesday 14<sup>th</sup> April** 10:30am-12pm, **Wednesday 15<sup>th</sup> April** 1:30pm-3pm &  
**Thursday 16<sup>th</sup> April** 10:30am-12pm

### EASTNEY EASTER EGGSTRAVAGANZA (**No Booking**)

**Saturday 18<sup>th</sup> April** 11am-2pm

Easter Egg Hunt      Meet the Easter Bunny

Easter Bonnet Parade      Face Painting

**And Much More!**

\*Look out for craft session booking details, and more event information



and on our website:- [eastneycommunitycentre.com](http://eastneycommunitycentre.com)



## V.E.DAY BANK HOLIDAY FRIDAY 8 MAY 2020

Baffins Pond Association are planning to Celebrate the 75<sup>th</sup> Anniversary of VE Day at Baffins Pond with afternoon tea dance, Vintage Market, Re-enactments and Swing Band. Full details on



Baffins Pond Association Facebook page



**We pride ourselves on giving you the  
best experience in your local Salon.  
We cover a range of styles to suit all.**



***Wedding and Prom hair***

***Matrix and L'Oréal colours***

***Come in and chat to our friendly team***

***9/11 Locksway Road, Milton***

**02392 291150**



## MILTON NEIGHBOURHOOD FORUM COMMITTEE

[MiltonNForum@aol.com](mailto:MiltonNForum@aol.com)

Janice Burkinshaw – Chair	Rajah Ghosh
Dave Willcox – Vice Chair	Dan Brookes
Pam Pritchard – Treasurer	Martin Lock
Rod Bailey - Milton Neighbourhood Plan Chair	
Margaret Nicholas - Secretary	
Kimberly Barrett	Lyn Mills
Dan Brooks	Peter Mills
Ian Clark	Reg Puntis
Paul Docking	Martin Silman
Dominic Goodyear	Larry Nicholas (Co-opted)

### **Ward Councillors – Milton**

#### **Cllr Will Purvis**

6 The Parkway,  
Portsmouth, PO3 6GQ  
(07590 282135)

[wapurvis@me.com](mailto:wapurvis@me.com)

#### **Cllr. Ben Dowling**

27 Redwing Court, PO4 8PB  
(0754 0947364)

[btldowling@gmail.com](mailto:btldowling@gmail.com)

#### **Cllr Gerald Vernon-Jackson**

39 Lindley Ave., Southsea  
(02392 834551)

[geraldvj@gmail.com](mailto:geraldvj@gmail.com)

### **Ward Councillors - Baffins**

#### **Cllr. Darren Sanders**

Flat 6, 92 Victoria Road North  
Southsea, PO5 1QE  
(07740 680612)

[darrensanders59@gmail.com](mailto:darrensanders59@gmail.com)

#### **Cllr. Lynne Stagg**

71 Highgate Road, Copnor  
(02392 780245)

[lynne.stagg29@gmail.com](mailto:lynne.stagg29@gmail.com)

#### **Cllr. Jeanette Smith**

43 Paignton Ave., PO3 6LL  
(07557 339467)

[j.smith1053@hotmail.com](mailto:j.smith1053@hotmail.com)

[Neighbourhood Planning Forum website http://miltonplan.org.uk](http://miltonplan.org.uk)

Supported by



**Portsmouth**  
CITY COUNCIL

The Neighbourhood Forum is  
responsible for editorial content, design and  
distribution of Milton Matters.  
Printed by Bishops Printers