

MILTON MATTERS

Issue No 67

Milton Neighbourhood Forum

June 2019



Milton Ward Councillor Ben Dowling and Roxana Andrusca are appointed Deputy Lord Mayor and Deputy Lady Mayoress

Wednesday 19 June 7.00 pm
Mary Rose School, Gisors Road, off Locksway Road
NEXT FORUM AGENDA
FORUM A.G.M.
Air Pollution in Portsmouth
Fiona Garth – Solent NHS Trust on plans for St Marys & St James

OPEN FORUM MINUTES 20 March19

The Chair reported the sad deaths of residents who have been avid Forum supporters, including Rodney Barnes aged 74, (Milton Matters delivery), and Phyllis Priest aged 93 and Dimetris Papanicolaou aged 99, (both former founder committee members).

The chair drew attention to recent items of interest to local residents including:-

- changes to the number 13 Sunday bus service (sponsored by PCC);

- the new appointment service for Doctors;

- the recent Planning Committee approval to the building of additional accommodation at the former HMP Kingston: and

- the deferment of an application for 130 homes at the St. James' Hospital site (due to the City Council reconsidering the status of the Villas and whether they should be 'curtilage listed'

Portsmouth University have published their intention of demolishing the '60s buildings at Furze Lane on 1 May 2019.

AQUIND INTERCONNECTOR

Representatives from Aquind spoke about the proposed new interconnector sub-station to be located at Lovedean and the plan to run a power cable from France to it. Alternative sites for the connection point were considered, but Eastney has been identified as the preferred connection point from France, with Lovedean selected for the substation following an assessment by the National Grid. The final route from Eastney to Lovedean for the cable has not yet been determined, but the team from Aquind were keen to explain that

no residents' homes would be affected and the cable route will be via roads and/or public land.

Aquind had sent ambiguous letters to certain residents, which had the effect of alarming them into thinking that Aquind would be ousting them from their homes – an example of how not to communicate effectively with people about an important issue.

OFGEN has granted a Development Consent Order and there will be on going consultation about the route for the cabling works. It is anticipated that work will commence during 2021, with the final commissioning in 2023.

There are a number of routes through Eastney which the scheme could use. Members of the public are being asked which they prefer. The next meeting is 30 March '19 in Milton Village Hall and consultation sheets will be available to be returned by end of April. Although preferences may be stated, the ground conditions and permissions of landowners etc. will also have an effect on the route selected. In September 2019 there will be a submission to the Secretary of State followed by further comment and hearings.

In reply to questions from the public, it was confirmed that the electromagnetic field generated by the supply would be very low at 26.

THE CITY PLAN AND THE NEIGHBOURHOOD PLAN

Cllr Ben Dowling introduced the topic of planning for the future and confirmed that a new City Plan was being drawn up. He identified certain key factors...2

FORUM MINUTES 20 March cont

affecting Portsmouth currently, including air pollution, green technology and ideas to make the city greener. Mention was made of potential issues with charging points for electric vehicles as the charging points would need to be kept clear, thus creating parking pressures. Despite longstanding concerns by residents, it is only recent air pollution statistics that have resulted in additional pollution monitoring across the city (on the instruction of the Government) to attempt to deal with our air quality problem. An option tried elsewhere in the country is a congestion charge approach, although this may not be suitable in Portsmouth.

The Leader has requested money from the Government to provide initiatives such as free bus passes, better public transport, a scrappage scheme all to avoid a Clean Air Zone. Leaflets will be sent to every home as local residents will have to change the way they live. As the plans to tackle the very serious air quality in Portsmouth are still being drafted, it was agreed this would be on the agenda for the next Forum.

Rod Bailey, Milton Neighbourhood Planning Forum Chair, announced the local plan has been written, and follows the City Plan policies closely. He identified that Langstone and Portsmouth Harbour were features for Natural England consultation, with regard to Brent Geese.

Rod asked residents to comment on the Neighbourhood Plan, which is available on line at:- Miltonplan.org.uk

Toby Ayling, PCC Policy Planning Manager, spoke about the City Plan, which will set out the planning policy framework for a period of 15 years. The Plan attempts to identify the type of developments needed across the city and is linked to a central government agenda; the Plan needs to be evidence-based and consultation with residents is crucial – the consultation deadline date is 25th March 2019! and comments can be submitted via: planning.policy@portsmouthcc.gov.uk He identified Tipner and Horsea as being an option for land reclamation, with a new neighbourhood, impacts and opportunities. SYSTRA is working with the city council as consultants, and factors to consider include transport, tree cover assessments and green corridors.

Comments from the floor included whether the new city plan documents would have been drafted as published if the air quality statistics had been known. Cllr Dowling said that improving the air quality should take precedence over the newer high targets for 863 new homes per annum in the city which many residents commented on as being completely unrealistic.

Toby explained that following the closure of comments on 25 March a draft city plan will be published in Dec 2019 and will reflect and catch up with air quality improvement initiatives.

In response to a question from the Neighbourhood Planning Forum, Toby confirmed that Site allocations have been submitted, MT3 and MT4 will be replaced but will stand until the new plan is in place.

YOUR LOCAL FAMILY LAW SOLICITOR



RUTHERFORD SOLICITORS



257 MILTON ROAD

PORTSMOUTH PO4 8PQ

Tel: 02392 735700

www.rutherfordsolicitors.co.uk

VERY COMPETITIVE FIXED FEE OPTIONS
LEGAL AID AVAILABLE

WE OFFER **LEGAL AID** ADVICE IN FAMILY LAW INCLUDING CHILDREN, CARE PROCEEDINGS, DOMESTIC VIOLENCE, DIVORCE, FINANCIAL MATTERS ETC. ***THEREFORE IF YOU ARE ELIGIBLE YOU MAY QUALIFY FOR FREE LEGAL ADVICE***

WE ARE OFFERING A SUBSTANTIAL DEDUCTION ON THE PRICE OF WILLS AND LASTING POWER OF ATTORNEYS FROM 17.6.19 – 19.7.19 (T&C's apply)

Straightforward Individual Will: **£129.00 + VAT** (usual price £165 + vat)
Straightforward Joint/Mirror Will **£199.00 + VAT** (usual price £265 + vat)

Offer on Lasting Power of Attorney - **£180 + VAT** (excludes registration and OPG fee) – (usual price £350 + VAT) - Please telephone us or call in to the office for further details

FOOD CYCLE PORTSMOUTH

Food Cycle cook and serve community meals across the UK. There are millions of people going hungry, thousands more who are lonely and isolated and tonnes of food going to waste. Food Cycle Portsmouth collect food from retailers that would otherwise be thrown away and with the help of lovely volunteers, cook it up into a tasty, healthy three course meal for those most in need in our city.

Food Cycle Portsmouth serve hot meals from the John Pounds Centre in Old Portsmouth every Tuesday at 7pm and Kings Church on Somers Road every Thursday evening at 6pm.

Food Cycle Portsmouth is a warm, welcoming space for people in the local community to join us for free tasty meals and is only made possible with the great volunteers giving their time, enthusiasm and energy.

If you like what Food Cycle does and would like to make a difference in Portsmouth, there are a number of ways you can get involved. Join our volunteer team to collect surplus food from retailers, cook and get creative in the kitchen or host and give the guests the best experience. Please register your interest on foodcycle.org.uk



<https://www.foodcycle.org.uk/location/portsmouth-john-pounds-centre/>

FOOD CYCLE PORTSMOUTH IN ACTION



Portsmouth Fruit & Flower and Winnie's of Milton Market are the only independent retailers that regularly donate food on a Tuesday and Thursday towards that evening's meal at John Pounds and Kings Church.

On Tuesday 30th April, the staff of Portsmouth Fruit & Flower took over the kitchen at John Pounds and together created a fabulous three course meal. Food Cycle provides vegetarian meals only and the volunteer chefs have to devise the three courses from what has been collected from retailers on the day. We were lucky to have a lot of vegetables to choose from, plus fruit, bread and cakes. As a team we chopped, sliced, cooked, served, washed up and socialised with the evening's guests who all tucked into and enjoyed, huge pans of

Carrot and coriander soup for starters
Vegetable curry and potato wedges for main course
Fruit salad and cakes for dessert
Washed down with a cup of tea.

It was good to see where our regular donations go.
We had a great time and plan to take over their kitchen again.

Milton Village Community Association

Milton Village Hall, 182 Milton Road, Southsea, Hants, PO4 8PR

Tel. 023 9287 3788 Email: miltonvillagehall@gmail.com

Office: 9.30am-12.30pm Mon-Fri Website: www.miltonvillagehall.co.uk

MEMBERSHIP 2019-2020

If you receive Milton Matters you can become a member of our Association!

Our new programme of trips/activities is due out in September so make sure you've joined (or renewed) by the first week of September to take advantage of membership benefits!

Membership costs just £7pp per year (part year in the first year) and entitles you to discounts on private hall hire, priority booking & cheaper prices for trips/events and special offers/discounts in Pure Ground Coffee Shop! Don't delay, contact us today!



PURE GROUND COFFEE SHOP at Milton Village Hall

Enjoy real coffee & delicious food Monday to Saturday 9am-4.30pm!

Full Afternoon Teas (prebooking essential) at just £10pp!!

Party Food Boxes & Hall Hire packages from just £80 for 15 people!

(includes hall hire, food & treat for all paying children)



Children's Food Boxes @ £3

We still have spaces available on the following trips:

* Moors Valley Country Park * Saturday Night Fever

* A weekend trip to Birmingham * Nativity the musical

Look out for these fabulous trips in the next programme!

*King and I at the Mayflower

* The Real Yorkshire Experience featuring York & Harrogate

CURRENT REGULAR ACTIVITIES at Milton Village Hall (Red = New)

Monday	Tuesday	Wednesday	Thursday	Friday	Sat	Sun
Music Mad	Music Mad	Music Mad	Weight Watchers	Yoga	AS Tots Soccer	Keep Fit
Little StepsGym		Bingo n Brunch (m)	Little Steps Gym	Cribbage Club	Little StepsGym	AA
Tai Chi	Beetle Drive (m)	50+ Keep Fit	Tots Soccer	Performing Tots (AP)		
Mum&Baby Fitness	Yoga	Little Steps Gym	Quiz Time (m)	DesignMake Create		Light House
Curling	Children's DanceClass	Superstars Soccer	Pilates	Beginners Line Dance		Church
Zumba	Boxercise	Breve Easy Choir	Zumba	Yoga	Improv Comedy	
TapDance		Aerobics	Line Dancing	AP Performers		



Like us on Facebook for latest news & info!

VISIT TO BUDDS FARM WASTEWATER SITE



Following Southern Water's talk at the Forum we were invited to see their operation at Budd's Farm and enjoyed a fascinating afternoon viewing the processes at the site upon which we all depend! The scale of the site is awe-inspiring treating almost 109million litres of wastewater per day – enough to fill 46 Olympic sized swimming pools. This can reach 200 million litres in storm conditions. Until year 2000, wastewater was released untreated each day into Langstone Harbour from Budds Farm and into the sea from Eastney.

The site serves 410,000 people. Waste water flow for treatment at Budds Farm is from two principal sources:

- 1,000l/s of the flow is received from the Waterlooville and Hayling Island (W&HI) sub-catchments.
- 1,400l/s is pumped from the Portsmouth sub-catchment via the Eastney Pumping Station.

Wastewater arriving from Eastney is already screened and follows an initial treatment different than that from W&HI

The treatment process is what we observed. First the waste water is screened to remove what is called RAG (cotton buds, wet wipes, nappies etc) Only the three Ps – poo, pee and (toilet) paper – should be flushed. The RAG is washed and dried and fed into skips for disposal. It is then screened to remove road grit from the surface water element.





Next is "*Primary Settlement*" these are holding tanks (clarifiers) with rotating arms, as it settles sludge is removed and passed to the "Sludge Treatment Centre"

It now goes to "*Aeration*", this is a four stage biological nutrient removal process incorporating methanol dosing as a carbon source.



Onwards to "*Final Settlement*" eight holding tanks where more sludge is removed to the STC. After this the treated water returns to Eastney where it is released 5.7 km out to sea via the "long sea outfall". This level of treatment ensures it meets the stringent European legislation for seawater quality.



The STC treats both indigenous sludge and imported sludges from Peel Common. Dosing the sludge with liquid lime and drying the sludge meets all the requirements for recycling to "cake" for agricultural use as well as preventing the release of ammonia gas, thus preventing smells.

Biogas from the digesters is stored in a 2,100 m³ gasholder and used as fuel for a combined 2Mw heat and power generator to produce its own site electricity power, it can also sell green electricity back to the grid as renewable obligation certificates.



The whole process takes 16 hours from arrival on site, to treat the wastewater and 2 hours to discharge via the long sea outfall.

Ian Clark, Forum Committee



HAIR LOUNGE



261 - 263 MILTON ROAD . PORTSMOUTH
SOUTHSEA . HAMPSHIRE PO48PQ

ESCAPE

NEW CLIENTS WILL
RECEIVE A
30%
DISCOUNT!



T:023 9283 3999



Angus Tree Services

Tree pruning
 Tree reductions
 Tree felling
 TPO & conservation area work
 Hedge cutting
 Stump grinding
 Land clearing

LANTRA approved
 Fully insured
 Free estimates
 All areas covered
 Eco friendly equipment
 Waste disposal
 Friendly, efficient service

07775 764669 bob@angustreeservices.co.uk

For all your arboricultural needs Call Bob for your free quotation

PICNIC ON THE GREEN
2019
Saturday 22nd June
2pm TO 5pm
 St James Field, Locksway Road, Milton

Opening by The Deputy Lord Mayor

Punch and Judy Show
 (If raining show will happen in St James's church hall)

Local community stalls
Refreshments, Cakes & Ice Cream

Dog Show Bouncy Castle
Tombola Face Painting
Fun Races Football Comps

FREE ADMISSION

Bring a picnic and come along with all the family
 Milton-Neighbourhood Forum

Graphic design by Photo-Pix Photos @ Graphic Solutions



A PORTSMOUTH D-DAY WALK AROUND MILTON

As we have researched the D-Day Walk here in Milton and Eastney, we have been amazed at how quickly and how much life changed from what nostalgically looks like an idyllic, peaceful lifestyle (but in reality, quite a hard one) to something much closer to the life we know today.

Before the war, men worked, women stayed at home and did the washing once a week, children had skipping ropes across the road as there were no cars, and if you had a bath, it was typically a tin one in front of the fire in the living room. One lady we have been researching grew up in Eastfield Road and she used to tie her skipping rope between her front door and her friend's door across the road, but she had to untie it at 6 o'clock every evening, because that is when the carter (wheel maker), at the end of the road, used to exercise his horses up and down the road. They probably needed a bit of a run after a day pulling carts around the city.

Compare that to the 'war effort' in the city in the run up to D-Day where everywhere you looked there was evidence of the war, whether it be soldiers training, dummy tanks or starfish emplacements (meant to look like towns at night) to mislead enemy



bombers, major construction such as the Mulberry Harbours at Hayling or the Horsa gliders here in Milton, or the testing of anti-mine explosives in the canoe lake or bouncing bombs off Eastney Beach and the thousands of men billeted at local hospitals and elsewhere in the city in preparation for the invasion.

This industry was against a backdrop of great hardship (rationed food, no new clothes, toys or furniture) and major displacement.

Many homes in the city had been bombed, children evacuated, some people walked to the comparative safety of Portsdown Hill every night to sleep there rather than risk the bombs in the city.

It was just one day in June 1944. It was obviously an important one as it changed the course of the war, but its impact on the local area is actually bigger than that – there may only be echoes of that time left now, but they are still there and they still shape the city today.



The Walk We have mapped 2 walks, a shorter one and the full walk. Both start at Eastney Community Centre in Bransbury Park and start by painting a picture of local life between the wars,



how Milton Market developed and how people lived. We then move to Dunbar Road where a bomb dropped in 1942 (see picture), which helps explain the change in attitude of ordinary people during the war. Further on, we come to the site of the old White & Newton factory where Horsa gliders (pictured left) were made – these were crucial in

taking Pegasus bridge and other key sites on D-Day.

The longer walk heads to Milton Locks with views of the abandoned Mulberry Harbour (4 were built on Hayling Beach) and the sites of wartime decoys, while the shorter route cuts through St James Hospital and meets the long route in Moorings Way, site of the houseboats where so many of those displaced lived after the war. The walk ends in Milton Cemetery, at the grave of one of those brave men who went but did not return.

Leaflets with full details of the walk will be available from

Milton Village Hall

Eastney Community
Centre

The Beddow Library

D-day Story (Southsea
Seafront)



Guided Walks If you wish to join us, there will be guided walks on



2nd June and 14th July, starting at 1pm at Eastney Community Centre (outside the café) in Bransbury Park. We will also have a short version of the walk starting at 1pm on **Saturday 22nd June** also from Eastney Community Centre, ending at the Picnic on

the Green at St James Hospital.

Please book these dates at Milton Village Hall Association (contact details on P.7) as walkers will have to be restricted to practical numbers. Do come along and join us, or if you are interested in a walk on a different date or with a group of you, do let us know via email or on our website. (Email: info@miltonportsmouth.info) For more information and latest details see <http://miltonportsmouth.info/d-day-walk>



At the Annual Mayor Making Ceremony, Alison Irish of HiLites Hair gains the Portsmouth Civic Award for charity fund-raising

**Portsmouth Choral Union sing at the New Theatre Royal, Portsmouth
Sat. 6 July 2019 7.30 p.m.**



“Tonight, Tonight”

West Side Story Choral Suite/Mass – Bernstein Misa Criolla - Ramirez
Conductor: David Gostick - With Southern Pro Musica

Tickets: www.newtheatreroyal.com Tele: 02392649000 - at Box Office.

For more information: www.pcuchoir.org

Registered Charity no. 266974 Find us on Facebook and Twitter

Chatter Box



Fill your Thursdays with friendship, games, active, creative fun and guest speakers

Thursdays 1.30 – 3.30pm
Methodist Church Highland Rd (Op.health centre)
Eastney Portsmouth PO4 9PW £4 inc. tea/coffee

02392 2933026 or
07800 895990

 mandie.ohara@mha.org.uk

SING!
for Fun



All abilities welcome, no auditions, no need to read music, easy to follow melodies and popular songs

Fridays 2 – 3.30pm
Methodist Church Highland Rd (Op. health centre)
Eastney Portsmouth PO4 9PW £4 inc. tea/coffee

02392 2933026 or
07800 895990

 mandie.ohara@mha.org.uk



76 Locksway Road, Milton, PO4 8JP Tel: 02392 756399

Traditional family run Fish & Chip Shop

All our food is freshly cooked to order

DELIVERIES:- 1 ½ mile radius of shop

Lunchtime 11.30am – 2.00pm (£5.00 Minimum)

Evenings Tuesday & Wednesday 5.00pm – 8.00pm (£10.00 minimum)

[Facebook.com/crispycodportsmouth](https://www.facebook.com/crispycodportsmouth)

Please visit our Facebook page for our full Menu and Special offers



 www.pingzone.co.uk



PC and Laptop repairs



Is your machine running slow?



Mobile phone and tablet screen repairs



Upgrades



Networking



Virus and Malware protection

Please contact Dave if you need any help.

 02393 593 393  07944 917 293  support@pingzone.co.uk



14 Tern Walk, Milton, PO4 8QG - by appointment please



COULD I MANAGE WITHOUT A CAR?

My car had been serviced the previous week so I had no qualms about setting out to Wickham for a Saturday trip. However... as I pulled out of the Square, clouds of blue smoke appeared in my rear-view mirror and the engine was rather sluggish. In my innocence, I ploughed on down the hill at Wickham, past Chesapeake Mill and halted on the rise to cross the notoriously dangerous road. Waiting for a clear view, my engine died and there was no response to the accelerator. Three cars sat behind me, so there was no retreat! Flashers on and a frightening wait, I tried the engine again and it reluctantly fired and off we went across the junction, I glanced at Wickham church and thanked my guardian angel. It was downhill all the way now I decided, back to Hendy Ford..

"I am sorry madam, but there is oil in the fuel line. We shall need your car for a week. No, we do not have courtesy cars. Shall I call you a taxi.?" So from then on I was on my own....

With no knowledge of the bus from Paulsgrove to Moorings Way, the taxi dropped me at Milton Market hairdressers. I had accepted an invitation out to lunch the following day but without wheels I could not make it easily to Horndean so phoned my sister in law and invited her to me instead for Sunday lunch. This required some quick additions to my fridge, I did my essential shopping in Milton and set off to walk across Bransbury Park to carry it all home.

All the way I was adjusting to how I could achieve my next 7 days' timetable. The hours I had planned to spend at the allotment would now be used preparing food and a hasty dusting session. Oh! and the lawn of course. Just get that bit of ironing out of the way. Don't forget to Brasso the doorknob. Find the recipe for pork steaks on ratatouille and for pink rhubarb crepes...had better start now.

I would call the Dentist on Monday and postpone my appointment – they would understand. Well, they didn't and wanted to charge me £30 for a cancellation so I had to find my way to Emsworth. Thank goodness for train and bus times on the computer. I caught the 11.10am No.13 bus to Fratton Station in time for the 11.37 train to Emsworth. With 7 minutes to walk to the Dentist, I managed to arrive on the dot of 12noon. I returned on the 1.02 from Emsworth to Fratton, spotted a No.1 bus to the White House Terrace and walked up Locksway Road to arrive by 1.45 in time for my friend who was visiting at 2pm. Net cost £3.50 with senior rail card and bus pass, a saving of £26.50 on the cancellation charge. In the evening I enjoyed a lift to Ballroom Dancing at 7.30 pm. There is of course, no No.13 bus at that time to take me as far as Winter Road, nor to return me home at 9 pm

Tuesday at the Allotment would be just the thing. I could not carry my 2 buckets of kitchen waste for the composters but loaded up a wicker basket with a travel-cup of coffee, items for Locksway Road post office, my seed potatoes, onion sets and a packed lunch. I felt like Little Red Riding Hood off to see my granny. On arrival, the coffee had leaked all over my letters which I would have to re-envelope before posting. However, it was a lovely warm March day and the potatoes were planted by 3pm and I walked back to catch a lift with my son to to his home for tea. I had to ask for a lift home at 9pm - disturbing his evening.

Wednesday brought my 9 am blood test at St Mary's. I walked as usual through Milton Cemetery but was told to go away until 10am. (I confessed to a slimline tonic the previous evening which broke my fast!) Leaving St Mary's I walked past the Prison to Kingston Cemetery to visit our family graves. I became very aware of the level of pollution in the air and returned through the green refuge of the cemetery to St Mary's Road. No short-cut through St Mary's House grounds, so through fumes I could taste, on to the hospital where I sat down with a very tight chest, waiting for the feeling to pass.

On Thursdays I always walk via St James to Milton Village Hall then on to Pilates at Eastney CC and home via Bransbury Park. But on Friday I had to plan my journey to Old Portsmouth to the last indoor bowls session of the season. I judged that the 1.10pm No.13 would get me to Fratton Bridge and I could walk to Old Portsmouth. I knew my way through Somerstown but didn't realise it would take me half an hour and I arrived at 2.05 – 5 minutes too late for the start of bowling. (Should have taken a taxi they said). Still I stayed and watched the others but received a phone call at 4pm from the house clearance firm who wanted to visit the house next door and I had the key. He was in a hurry but I explained I still had to do the bus journey and expected to be home at 5.0. We compromised and I jumped into his Transit van at the Queens Hotel and enjoyed another lift home.

The car was ready by Saturday and a kind friend took me to Paulsgrove. The good thing was there was no charge! It leaves one with a dilemma however. We all know how the air in our city is affected by all the traffic and we are part of the problem, but how do we get around, carry shopping, equipment, tools and enjoy facilities within Portsmouth? I could change my dentist from Emsworth, but did not find it easy to get to Old Portsmouth nor Paulsgrove. People who manage without a car will tell me I am spoiled, but it has made me realise that to cope I would have to restrict the amount I do each day, the distances I travel, and to lead a less varied life. I am deterred by the lack of kerbed cycle lanes. Walking is good, but only if you can find the few green corridors otherwise every breath is full of fumes with no second breath of clean air. Soon the green walk through St James will be gone too. How healthy is walking in the city streets? There has to be a radical public transport solution to this problem and soon! *Chair*

BOXALLS BATHROOM CENTRE

Creating beautiful bathrooms for over 50 years!

Supplying to the Public & Trade offering great value for money and expert advice on everything for the bathroom!

- 14,000 sq.ft. of Bathrooms
- Bathroom Furniture Specialists
- 400 Suites in Stock
- Instore Planning Service
- Over 60 Displays including many elegant en-suite settings
- Customer Parking
- A family owned, independent business



A Showroom you will like – prices you will love!

Do visit us, you won't be disappointed

Open: Mon.-Thurs. 9am-6pm: Fri. 9am-6pm: Sat. 9am-5.30pm

139-145 Copnor Road, Portsmouth, PO3 5BS

Tel: 02392 694106 www.boxalls.co.uk

GUIDE TO LOCAL SERVICES IN MILTON



MOTOTECH – Unit 8, Warren Avenue Industrial Estate

For all your mechanical requirements MOT's and recoveries available. **Tel: 023 9287 4784**
Specialists in Performance and Luxury Cars

BJM UPHOLSTERY LTD
107 Guildford Road, Fratton
Tel: 02392 822642



Foam cut to size, cushions filled, also re-upholstery



MHA Portsmouth & Havant Live at Home

Support and activities for the over 60s. Newsletters, outings, activities, see our Singing and Chatterbox ads. P.15
Call Mandie for more details 02392 293306 / 07483 112137 / 07800 895990
portsmouth.liveathome@mha.org.uk



CTN (Confectionery, Tobacco & Newsagent)
add Stationery Photocopying/Faxing and Greeting Card Specialist and you have

JG Riley, 90 Locksway Road, Tel. 9273 1574

Open Mon-Sat 06.30 to 18.30 (Lottery 19.30) Sun. 06.30 -13.00



*Organic Natural
Health & Beauty*

CHERRY ORCHID BEAUTY- NEALS YARD REMEDIES ORGANICS

Consultant Beauty/Massage Therapist- AMY 07530 000821
Mobile/Home Based Milton, Southsea

Offering Gel II, OPI, Neals Yard, Manicures, Pedicures, Callus Peels, Facials, Threading, Tinting, Lash Lifts, Waxing, Reflexology, Henna brows, Indian Head, Neals Yard Facials, Pregnancy, Hot Stones, Massage, Swedish,

Aromatherapy Massage. Experienced & Qualified visit

www.cherryorchidbeauty.co.uk or Facebook cherry orchid beauty

ADVERTISING RATES Contact Pam Pritchard (07837 929385)

Full page £100. Half page £50. Directory entry £15.

for your next advertisement pammatthews2010@gmail.com

GUIDE TO LOCAL SERVICES IN MILTON



STEPHEN HARDHAM CARPENTRY
For all your carpentry needs no job too small.
Honest, friendly and reliable service
Phone 07747 721427 for a free no-obligation quote

THE JOHN DOYLE PARTNERSHIP – Accountancy Services
Marian House, 62-64 Priory Crescent. Tel/Fax:023 9261 0450
Payroll and accountancy services for small businesses, sole
traders, partnerships and limited companies.

Contact Kevin Doyle
www.thejohndoylepartnership.com e-mail
info@thejohndoylepartnership.com



**Prints and original paintings of Milton, Eastney and
Portsmouth by local artist John Pearson. Visit
www.johnpearsonartist.co.uk phone 02392 828998**



IT'S A DOG'S LIFE – professional dog grooming
salon based in Milton Call Sarah – 07716 124932.
All dog grooming services provided in a purpose built
grooming salon on a one-to-one basis.

Only your dog is in the salon at that time.

City & Guilds trained groomer. Home dog boarding also available

DIPEST PEST CONTROL LIMITED

All types of pest eliminated – No more than £50 Mr Simon
Houghton MD, MRIPH, IMIFM, MBPR(Pest Control)
Field Biologist

Hope House, 19 Revenge Close, Southsea, PO4 8YE
PHONE (023)9235 8692 MOBILE 07748 791 248
dipestpestcontrol@ntlworld.com



Local home visit cat sitting service.

07793 108 307

5.0 ★

www.purrfect-company.com



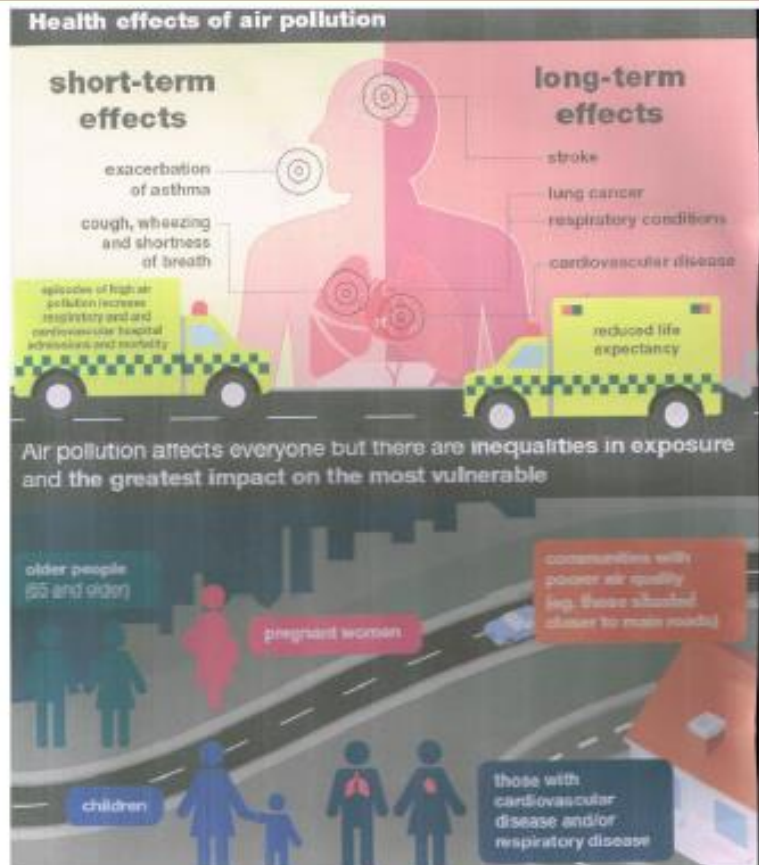
Exclusive dog boarding just for your dogs.

07902 264 918

*Both fully insured

FORUM ISSUES

We are hoping to feature progress on air pollution solutions at our next Forum. We understand that the 2018 air quality figures are still being validated. The next stage is for the Council to agree its Air Quality Action Plan with DEFRA by 31 Oct. The High Court Judgment of February 2018 requires Portsmouth to achieve air quality to legally compliant levels in the shortest possible time but no later than 2021 by the means most likely to achieve them. **In the mean -time, we should all try to stop idling engines.** We all see taxis, vans and cars with engines running whilst drivers read texts, etc. **Please make sure its not YOU.**



Our speaker on Wed.19 June will be the Communications Advisor for Solent NHS Trust telling us about their plans for St Mary's and St James Hospitals.



Memorial Plaque to American Servicemen – now installed at St James' Hospital



We pride ourselves on giving you the best experience in your local Salon.
We cover a range of styles to suit all.



Wedding and Prom hair

Matrix and L'Oréal colours

Come in and chat to our friendly team

9/11 Locksway Road, Milton

02392 291150



MILTON NEIGHBOURHOOD FORUM COMMITTEE

MiltonNForum@aol.com

Janice Burkinshaw – Chair	Rajah Ghosh
Dave Willcox – Vice Chair	Peter Harling
Pam Pritchard – Treasurer	Martin Lock
Rod Bailey - Milton Neighbourhood Plan Chair	
Margaret Nicholas - Secretary	David Jordan
Kimberly Barrett	Lyn Mills
Ian Clark	Peter Mills
Karen Cooper	Reg Puntis
Paul Docking	Martin Silman
George Dominy	Larry Nicholas (Co-opted)
Dominic Goodyear	Karen Potter (Co-opted)

Ward Councillors – Milton

Cllr Will Purvis

6 The Parkway,
Portsmouth, PO3 6GQ
(07590 282135)

wapurvis@me.com

Cllr. Ben Dowling

27 Redwing Court, PO4 8PB
(0754 0947364)

btldowling@gmail.com

Cllr Gerald Vernon-Jackson

39 Lindley Ave., Southsea
(02392 834551)

geraldvj@gmail.com

Ward Councillors - Baffins

Cllr. Darren Sanders

Flat 6, 92 Victoria Road North
Southsea, PO5 1QE
(07740 680612)

darrensanders59@gmail.com

Cllr. Lynne Stagg

71 Highgate Road, Copnor
(02392 780245)

lynne.stagg29@gmail.com

Cllr. Jeanette Smith

43 Paignton Ave., PO3 6LL

jsmith1053@hotmail.com

(07557 339467)

[Neighbourhood Planning Forum website http://miltonplan.org.uk](http://miltonplan.org.uk)

Supported by



Portsmouth
CITY COUNCIL

24

The Neighbourhood Forum is responsible for editorial content, design and distribution of Milton Matters.
Printed by Bishops Printers