

# MILTON MATTERS

Issue No. 64

Milton Neighbourhood Forum

June 2018



*The Beeches, St James Hospital, due for imminent demolition*

Wednesday 13 June 7.00 pm  
Mary Rose School, Gisors Road, off Locksway Road

## NEXT FORUM AGENDA

Neighbourhood Forum Annual General Meeting

**POLICING ISSUES IN OUR AREA**

**UNIVERSITY FURZE LANE HALLS CLOSURE**

**NEIGHBOURHOOD PLANNING FORUM UPDATE**

**WHAT FUTURE FOR THE VILLAS IN ST JAMES?**

## **OPEN FORUM MINUTES 21 Feb**

### **Wind in the Willows Nursery**

The Chair confirmed that minutes of the 6 Sept. meeting had been published in the recent Milton Matters distributed to households across the Forum area. She stated that the Wind in the Willows Nursery had been contacted by some current and future users concerning the minutes in the belief that the Nursery might be closing. **This is not the case** and the Chair was happy to stress that the September minutes only represent points made at that meeting four months ago, and that no mention was made of any closure plans, nor are there any current plans for closure. Karen Potter confirmed that there is nothing further to add at this stage.

### **Committee Actions since previous Public Forum**

The Chair spoke about Marvellous Milton Market Halloween celebrations that were supported by the Forum and local traders, and drew attention to the committee's concern about city-wide air quality issues. The committee has also maintained correspondence with the Clinical Commissioning Group (CCG) regarding concerns about capacity at Queen Alexandra Hospital as population numbers are increasing. Also ongoing work to promote the Milton Heritage Trail; progress of CIL projects; the need for an effective tree replacement programme for removed trees that are subject to TPOs; seafront defences; and continuing involvement in the progress of the Milton Neighbourhood Planning Forum.

## **Eastern Portsmouth Traffic Corridor**

**Dr Russell Hayes** and **Ollie Willcocks** from PCC were introduced and spoke about work being undertaken to reduce congestion in the City, which is funded by £500,000 Government grant. Discussion focused on initiatives to improve the cycle route along the Eastern Road and across Milton Common, hopefully linking through St. James' Hospital grounds to the seafront at Eastney.

The emphasis of traffic improvements is linked to better signal management at busy junctions via the MOVA system which optimizes green lights, thus reducing congestion, the widening of existing cycle routes and improvements to bus stops/shelters on the Eastern Road. Inevitably, the question of returning the section of the Eastern Road southbound between Sword Sands Path and Langstone Road to two lanes was raised, a topic very often voiced by some residents in the Baffins Forum area.

Questions from the floor were directed to the ongoing inadequacy of the cycle path along the Caravan Park and the preference for a better path along the shoreline away from air pollution. Comments from the public were invited on [easterncorridor@portsmouth.gov.uk](mailto:easterncorridor@portsmouth.gov.uk) or via telephone 023 9284 1011.

### **Neighbourhood Watch Association**

The AGM of the Association is scheduled for 17<sup>th</sup> May 2018 at St. John's College. Michael Lane, Police and Crime Commissioner, will be attending and can hopefully be able to explain why support to Neighbourhood Watch is being severely curtailed. 2



## FORUM MINUTES 21 Feb cont

### St. James Hospital – Planning Application Update

**Bruce Voss** from Homes England, formerly the Homes and Communities Agency (HCA), spoke about the outline planning application for St. James' Hospital phase 1 which was submitted on 19<sup>th</sup> February to the City Council. The scheme provides 107 units of accommodation, whereas the original scheme showed 115 homes. There is a provision for 30% of units to be affordable/social housing. The villas cannot be retained, but the residential blocks will correspond to their footprints and character in a mix of one to four bedroomed homes, including apartments. The scheme was illustrated via an overhead screen which set out where homes would be sited and the layout showing green areas and tree placings.

**Frazer Osment**, the Homes England's Consultant, explained the care that had been taken following local consultation to prioritize the retention of trees in green public areas. He envisages the green areas being maintained in the future by a resident-led management company to safeguard public access, pedestrianisation and cycle ways. The view along Fair Oak Road has been retained to enhance the appearance of the Chapel. There will be no through road beyond Fair Oak Road, only access to the new homes because Homes England has no right of way access across the NHS land at Phase 2, which is unlikely to be sold to Homes England because the NHS is considering alternatives.

The trees have been categorized for retention and Bruce Voss offered a tour of the site to highlight the specific trees which would be retained. He stated that the CIL contribution to the City Council will be £825,000 with a Milton Common contribution of £935,929. The timetable for the application is:

Consent for outline planning – summer 2018

Builder of homes for sale and provider of affordable homes appointed;

Commencement of work on site 2020

Questions from the floor centred on the ability of the local area to absorb this new development, specifically the traffic issues. There is a Transport Assessment which everyone should read carefully so that their comments on the plan can be included when they respond. "Keep Milton Green" will publicise the Planning Application number to encourage response.

### Portsmouth CC New Local Plan

**Toby Ayling** from the City Council planning department explained the current position regarding the City Council Local Plan, stating that the Local Plan will cover the next 15 years and will supercede all other Local Plans. The Plan will highlight infrastructure needs and that important issues raised in the Milton Planning Forum should be recognized in the Citywide Local Plan. There had been a high level of response from the public meeting held at Eastney and from residents of Milton, and notice had been taken of those comments in the Council's report. **Claire Upton-Brown** ran through the process for implementing the Plan and the progress of formalizing the Milton Common as a Nature Reserve, which remains outstanding with Natural England.

# RUTHERFORD SOLICITORS



257 MILTON ROAD  
PORTSMOUTH PO4 8PQ



Tel: 02392 735700

[www.rutherfordsolicitors.co.uk](http://www.rutherfordsolicitors.co.uk)

## **VERY COMPETITIVE FIXED FEE OPTIONS**

AVAILABLE IN FAMILY, EMPLOYMENT AND CIVIL LAW

WE OFFER **LEGAL AID** ADVICE IN FAMILY LAW INCLUDING CHILDREN, CARE PROCEEDINGS, DOMESTIC VIOLENCE, DIVORCE, FINANCIAL MATTERS ETC. **THEREFORE IF YOU ARE ELIGIBLE YOU MAY QUALIFY FOR FREE LEGAL ADVICE**

**WE ARE OFFERING A SUBSTANTIAL DEDUCTION ON THE PRICE OF WILLS AND LASTING POWER OF ATTORNEYS FROM 1.6.18 – 31.7.18 (T&C's apply)**

Straightforward Individual Will: **£125.00+vat** (usual price **£165+vat**)  
Straightforward Joint/Mirror Will **£185.00+vat** (usual price **£265+vat**)

Offer on Lasting Power of Attorney - **£180+vat** (excludes registration and OPG fee) – (usual price **£350+vat**) - Please telephone us or call in to the office for further details.



# PICNIC ON THE GREEN 2018 Saturday 9th June 2pm TO 5pm

St James Field, Locksway Road, Milton



**Opening by The Lord Mayor  
Punch and Judy Show**

(If raining show will happen in St James's church hall)

**Local community stalls**

**Refreshments, Cakes & Ice Cream**



**Dog Show    Bouncy Castle  
Tombola    Face Painting  
Fun Races    Football Comps**

# FREE ADMISSION

**Bring a picnic and come along with all the family**

Milton-Neighbourhood Forum

Graphic design and Printing By Pix-Pix





## BOXALLS BATHROOM CENTRE

*Creating beautiful bathrooms for over 50 years!*

Supplying to the Public & Trade offering great value for money and expert advice on everything for the bathroom!

- 14,000 sq.ft. of Bathrooms
- Bathroom Furniture Specialists
- 400 Suites in Stock
- Instore Planning Service
- Over60 Displays including many elegant en-suite settings
- Customer Parking
- A family owned, independent business



A Showroom you will like – prices you will love!

**Do visit us, you won't be disappointed**

**Open: Mon.-Thurs. 9am-6pm: Fri. 9am-6pm: Sat. 9am-5.30pm**

**139-145 Copnor Road, Portsmouth, PO3 5BS**

**Tel: 02392 694106 [www.boxalls.co.uk](http://www.boxalls.co.uk)**

# Milton Village Community Association

Milton Village Hall, 182 Milton Road, Southsea, Hants, PO4 8PR

Tel. 023 9287 3788 Email: [miltonvillagehall@gmail.com](mailto:miltonvillagehall@gmail.com)

Office: 9am-12.30pm Mon-Fri Website: [www.miltonvillagehall.co.uk](http://www.miltonvillagehall.co.uk)



## Pure Ground Coffee Shop at Milton Village Hall

Enjoy real coffee & delicious food Monday to Saturday 9am-4pm!

Takeaway Service Available 4pm to 4.30pm. Enqs: 023 9282 3040

## Trip & Holiday Availability

The Association organises year round day trips & holidays to which all are welcome! We currently have spaces on the following trips:

*All trips include coach travel & entry. (NM = non-member)*

**Brooklands Museum – Fri 1 Jun (Half Term) Adult £29 Child £24 (NM + £2)**

**West Wiltshire TV & Film Villages – Fri 22 June Members £15 (NM + £4)**

**Dreamgirls – Wed 8 Aug (School Hols) Members £49 (NM + £4)**

**Poole & RNLI Discover – Tue 21 Aug Adult £22 Child £18 (NM + £2-3)**

**Guide Dogs for Blind Training Centre – Thu 22 Nov Members £25 (NM + £2)**

**Diamonds & Dahlias – Fri 31 Aug – Mon 3 Sep Members £229 (NM + £20)**

*Staying in Antwerp & visiting Zundert for the biggest flower parade in the world!!*

**Remembrance & Celebration End of WW1 – Sun 11 – Mon 12 Nov**

*Members £109 (NM + £10) 1 night away with entertainment and a visit to the National Memorial Arboretum on Monday!*

## Current Regular Activities at Milton Village Hall

Monday	Tuesday	Wednesday	Thursday	Friday	Sat	Sun
Music Mad	Music Mad	Music Mad	Weight Watchers	Yoga	Tots Soccer	Keep Fit
Little StepsGym	Advanced Cribbage	Post Natal Exercise	Little Steps Gym	Cribbage Club	Little Steps Gym	AA
Curling	Beetle Drive (m)	Bingo n Brunch (m)	Tots Soccer	Tai Chi		Light House, Church
Bravo Karate	Yoga	50+ Keep Fit	Quiz Time (m)	Beginners Line Dance		
Zumba		Little Steps Gym	Pilates	Baby Yoga		
TapDance		Sing Spanish	Line Dancing	Yoga		
		Lighthouse Church		Ballet for Adults		
		Keep Fit				



Like us on Facebook for latest news & info!

## THE 1904 GAS ENGINE HOUSE SEWAGE PUMPING STATION

**S**ituated in the parish of Milton, built in 1904, held in reserve for storm water surges after the new electric pumps installed next door in 1923, no longer held in reserve in 1971, Grade II listed in 1973, now part of our industrial heritage. owned by Portsmouth City Council and managed by the Museum service. The engines are maintained, preserved and presented to the public by volunteers. Open to the public on the last complete weekend of the month, excluding December.

From the late 1800's onwards there was a large expansion of residential and industrial development resulting in a corresponding increase in sewage flow. With the growth of the Portsmouth population from 112,954 in 1870, 173,692 in 1895 and to 190,000 in 1900 the timely disposal of waste and storm water was becoming a problem. The Town Council Drainage and Sanitation committee met on the 3<sup>rd</sup> March 1900 where Sir William Pink introduced the question of borough drainage. He proposed three schemes, two dealt with getting rid of storm water and one which dealt with the sewage problem and to relieve the sewers in Southsea.

The third scheme proposed to erect a pumping station to the west of the existing pumping station with gas engines capable of dealing with 1¼ million gallons of sewage an hour for the relief of the high-level sewer and 1½ million for the low-level sewer. The sewage would be conveyed via a new 42-inch diameter rising main to four new tanks with a capacity of 6,750,000 gallons alongside the existing tanks at Fort Cumberland. These additional tanks to be constructed with three new 42-inch diameter outfalls 200 yards to the north of the 1886 tanks. The cost of this scheme would be high ≈ £210,000.

He pointed out the sewage from the new Naval Barracks at Portsea would have to be dealt with and unless they had a relief sewer it would be impossible to send it all through the present mains. The borough engineer said the sewage in the low-level could not get through the sewer fast enough and the result was the water relieved itself at the lowest point - the lowest parts of Southsea. The borough surveyor told them he could prepare a scheme which will deal with the surface water.



Under the circumstances, therefore, the committee felt that they should obtain the advice of the specialist.

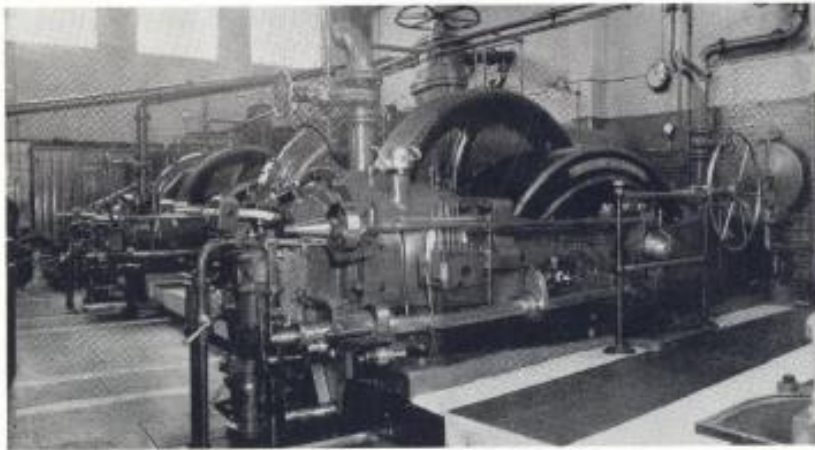


After consultation and tendering, in January 1904, the contracts for the sewer and tanks was let to Mr Bell of Tottenham and the additional pumping station with Crossley gas engines and centrifugal pumps to Mr W.W. Evans of Portsmouth.

Mr Evans tender for the gas house at £8999 11s 10d was the lowest and accepted.

(£9000 in 1904 is  $\approx$  £1,008,000 in 2017)

The choice of Crossley gas engines was based on the success of the 10 h.p Crossley gas installed at the Stamshaw Pumping Station in 1886.



The gas plant consists of three Y2 type 180 h.p (on town gas) double-ended Crossley gas engines with tube ignition.

Each engine drives a 24-inch Tangye's centrifugal pump through a flexible rope coupling at a speed of 180 r.p.m.

The Y2 engine is 21 feet (6.4 m) long, 9½ feet (2.9 m) wide, and weighs 20¾ tons. The flywheel is 8 feet (2.4 m) in diameter and is 17 inches (43 cm) wide.

The engines were supplied by Crossley Bros. Ltd. on 22<sup>nd</sup> August 1904.

There is also an air compressing engine and a priming engine. Each pump lifts 500,000 gallons per hour. This increased the capacity of Eastney pumping station from 500,000 to 2,000,000 gallons an hour

The engines originally ran on Town Gas and converted to North Sea Gas in 1971. The gas supply was disconnected c2000 against the advice of the Museum service.

An external water tank for jacket cooling, 40 feet by 14 feet and 5 feet 6 inches deep (12.2 x 4.2 x 1.7 metres), is supported on piers at the side of the engine house. It has a capacity of 19,250 gallons (87,395 litres).

**Ian Clark**

**March 2018**



## WHY ARE THERE VILLAS IN ST JAMES? BY PATRICK O'HARA



*Fairoak House*

Prior to the 1808 Lunacy Act provision of mental health care was ad hoc, unregulated and in private housing. Its recommendation to build county asylums was barely acted on. Compulsion came by way of the 1845 Lunacy Act which resulted in Knowle at Fareham being built as the county's asylum in 1853.

Portsmouth's rapidly expanding population placed huge pressure on the borough to house its pauper lunatics. In 1879 St James' was built on the 'corridor pavilion plan' and was more akin to a country estate in its execution. Its lodges, tree lined driveway, carriage turning circle, expensively sourced architectural detailing, service wings to the rear and its farm stretching to the shores of Milton Lake speak of the borough's civic pride.

The Local Government Act 1888 gave the council the authority to contract with other authorities for inmates providing a useful income stream and impetus for further expansion. In the 1890s the estate bought more farm land and added an isolation hospital, sanitorium, and extended the wings of the middle wards.

Agricultural worker's colonies were an established tradition in parts of Europe and toward the end of the 19<sup>th</sup> century German psychiatry pioneered the model for therapeutic care. Patients were to be housed in smaller more humane villas dotted around the grounds of the institution. The benefits were natural light, fresh air and the smaller numbers lessened the risk of infection. Their use was widely adopted including in Scotland.



In England, the Boer War had left many believing the race had been weakened by the feeble-minded poor. The colony system was considered at once too soft and too costly to handle the required segregation. The foremost asylum architect of the day admitted England had only experimented with a few detached villas in the grounds of traditional asylums.

In 1908 four villas were opened in the hospital grounds designed by Albert E. Cogswell (1858-1934). The northern pair Falcon and Baytrees, formerly known as Pink and King, housed working chronic inmates, and a second pair, Fair Oak House and The Beeches formerly known as Dickens and Brunel, for private fee-paying patients.

Built in a Queen Anne Revival style the villas have an irregular plan, asymmetrical facades and prominent gables. Constructed of Rowland Castle red brick with a slate roof. Exposed red brick on the ground floor with three glass panelled doorways opening onto a glass roofed veranda. By way of contrast the 1<sup>st</sup> floor has a roughcast finish with stone mullioned windows and the angles picked out in red brick.

The central bay steps forward under a gable which is decorated with a simple stucco device incorporating the large keystone of the main window. Of the two flanking bays the right hand one is noteworthy for its full height canted bay window. Both gable ends are simply decorated with neo-tudor timber strips, barge boards and drop finials.

The whole has the feel of a commodious suburban villa and its clean uncomplicated lines provide an interesting and deliberately quiet ambiance in contrast with the grandeur of the hospital main building.

Cogswell was Portsmouth's leading architect during the period of its greatest growth. Much of his work has been lost to bombing and injudicious planning but good examples of his work survive; Branksmere, Carnegie Library and Milton School come to mind. He was also known as the 'hospital architect' being there at the beginning assisting George Rake on the main hospital in 1879, he presided over the hospital's expansion over a remarkable five decades.

WW1 and shellshock 'war neurosis' shifted opinion and once the nation began rebuilding the colony system found favour. It is to this era that Devine 1929, Light and Gleave 1932 belong built in imitation of Cogswell originals. The Heritage Impact Statement upon which decisions to demolish seem based date all the villas to this phase. A date that allows the applicant to ignore.

The significant local architect who designed the villas. As built the villas were rare examples of the colony system and with the closure of the large metropolitan asylums they are rarer still. Finally as a group of four close to their hospital they are unique.

## WILL YOU HELP DETER LOCAL SPEEDING?



In the 4 years of running Keep Milton Green, residents have approached me about a number of issues from the development of St James to air quality, parking and even anti-social behaviour. However, one of the biggest issues I

consistently hear about from the people of Milton is **speeding**.

This is why I have decided to set up a Milton Speedwatch team. I went to meet the police and groups across the city who do Speedwatch for their areas. Central Southsea is a prime example of a good Speedwatch team with local councillors supporting residents to raise awareness. They have even caught someone doing 55mph in a 20mph zone!

Kindly - the Baffin's Councillors have used their CIL money to purchase top of the range speedwatch equipment and have offered to share it with us so we are already off to a flying start with support from them and our Milton Councillors!

We have an excellent officer in the Milton beat team - PCSO James Williams who is heading our Speedwatch. I have already discussed with him certain roads (with feedback from you all) that need to be monitored which include: Locksway Road, Moorings Way, Goldsmith Avenue, Warren Avenue, Milton Road and Velder Avenue. Therefore, our first port of call will be Locksway Road and we will branch out from there.

This is why I am asking you, the residents of Milton, to volunteer for this project. Whether you can only give 2 hours a year or a few hours a month - we really need your help. All it involves is a team of people standing with the equipment for an hour or two taking details of any cars speeding and then reporting it to the police (if they cannot attend) who then send out letters/issue points/visit the offender. This is a county wide scheme so if someone doing speedwatch in Ringwood clocks you speeding and you then speed in Portsmouth and we catch you, that's 2 strikes! The more people we have volunteering, the more flexible we can be and the more roads we can start to cover!

We have an amazing community in Milton who consistently support each other so I hope that this is something that we can all get behind to keep our roads safe for all who live and work here. Please feel free to email me at: [kimberlyemmabarrett@hotmail.co.uk](mailto:kimberlyemmabarrett@hotmail.co.uk) and I will be in touch to get a form to you electronically/personally and answer any questions you may have.

**Kimberly Barrett**



## PROGRESS ON THE MILTON NEIGHBOURHOOD PLAN

It is almost 3 years now since the Milton Neighbourhood Planning Forum was formally recognised by Portsmouth City Council as an approved Forum to prepare a Neighbourhood Plan and it is hoped by the time you read this we will be on the last stages of issuing a final draft for public comment. Our first draft can viewed on <http://miltonplan.org.uk>



We started with an aim to promote a more balanced community and safeguard against unsustainable development largely as a reaction to the proposed Site Allocations of 480-545 new homes on St James' Hospital and Langstone Campus in 2013 and 14.

Since then we have dropped surveys/questionnaires through the doors of residents and businesses in the Plan area and met with and consulted with the Council, Portsmouth University, Natural England, Homes England, Historic England and the NHS to gauge opinions on how best to locally secure development that meets the needs of everyone now and in the future. It is collaborative process to assist our Public Bodies in achieving a sensible outcome for the benefit of the whole community and not just the few. So even if our Public Bodies are no longer properly resourced to manage and run their services in the benefit of public interest we do have with "Localism" through the Neighbourhood Forum and the Planning Forum, a means of redressing the balance.

As readers will be aware the Planning Forum's views and the locally expressed consensus lead toward proposing a new school on Langstone Campus and a mixture of new homes, health care and employment uses for St James' Hospital to achieve the best outcome for these sites to mitigate the extent of further traffic congestion and damage to our Designated Wildlife Special Protection Area in and around Langstone Harbour. These uses also best meet our "sustainability" objective on striking the right balance between economic returns to landowners, the longer term social costs to and on residents and public services, and the wider costs of environmental damage to ecosystems and public health of inappropriate development in the long-term

It is therefore disappointing Homes England have submitted a mono-use housing scheme for the St James' Hospital Phase 1 redevelopment involving the demolition of historically important buildings and we are trying to influence them into reconsidering at least some of their scheme. Our Objection is on the website and it's an expression really of the wider failures of short-term politics and planning. We have found in preparing this Plan just how far Central

## **PROGRESS ON THE MILTON NEIGHBOURHOOD PLAN**

Government Policies have distorted the ability to achieve sustainable development locally notwithstanding it was a Central Government initiative to allow communities to have a say on the future development within their neighbourhoods.

Paddy O'Hara, one of our Forum Members has written an article herein about the Villas and their significance locally and you will see there is a national value in recognising their part in the evolution of psychiatric care. It never made any sense to us to see them bulldozed without exploring their re-use for Social or Dementia Care and in the meantime we are seeing what we can do to preserve them through Historic England.

The next step is to get our Plan acceptable to progress to a formal examination by an independent Planning expert. Before we can get to that stage we have to go through a 6 week public consultation which is why we had a second community "drop-in" event on 3<sup>rd</sup> March 2018 to see what, if any, changes the community suggest we might need to make before this prescribed consultation on the final draft is made. The March event reaffirmed residents' preferences for the mix of uses we are proposing even if most could not understand how Portsmouth, let alone Milton, could absorb further development. We had some further ideas on improving the future design and landscape of St James' Hospital but unfortunately that did include the retention of "Fairoak House" and "The Beeches" which Homes England wish to demolish and replace with flat roofed 3 storey blocks of apartments.

Neighbourhood Planning like wider Town Planning has to be a compromise and even if the Planning Forum would prefer to prefer to keep historic buildings and increase publicly accessible open spaces, if the development is of the right type and use, it could enhance or at least mitigate the stresses, on our existing ones and we can still positively influence improvements in future planning for Milton.

I will again be available at the next Open Forum on 13<sup>th</sup> June 2018 where I can explain our progress and answer your questions.

We are not planning on having a presence at this year's "Picnic on the Green" Event scheduled for 9<sup>th</sup> June but readers can post questions on our website.

We will also hold an AGM in the Summer at a date to be agreed.

Rod Bailey  
Chairman Milton Neighbourhood Planning Forum





## Angus Tree Services

Tree pruning  
Tree reductions  
Tree felling  
TPO & conservation area work  
Hedge cutting  
Stump grinding  
Land clearing

LANTRA approved  
Fully insured  
Free estimates  
All areas covered  
Eco friendly equipment  
Waste disposal  
Friendly, efficient service

07775 764669 [bob@angustreeservices.co.uk](mailto:bob@angustreeservices.co.uk)

For all your arboricultural needs Call Bob for your free quotation

HAIR LOUNGE

261 - 263 MILTON ROAD, PORTSMOUTH  
SOUTHSEA, HAMPSHIRE PO48PQ

ESCAPE

NEW CLIENTS WILL  
RECEIVE A  
**30%**  
DISCOUNT!

ESCAPE  
HAIR  
LOUNGE

Milton Park

T: 023 9283 3999

## GUIDE TO LOCAL SERVICES IN MILTON



**MOTOTECH – Unit 8, Warren Avenue Industrial Estate**

For all your mechanical requirements MOT's and recoveries available. **Tel: 023 9287 4784**

Specialists in Performance and Luxury Cars

**BJM UPHOLSTERY LTD**  
107 Guildford Road, Fratton  
Tel: 02392 822642



Foam cut to size, cushions filled, also re-upholstery

**ping zone**  
PC Repairs & Upgrades

- PC & laptops repairs
- Virus and spyware removal
- Custom build and upgrades
- Networking & WIFI
- Data recovery
- and much more

Your local PC repair man based in Milton. If you need help with a sluggish PC or even just setting it up, call Dave on **07944 917 293**.

*No job too big or small, no fix no fee*



**CTN (Confectionery, Tobacco & Newsagent)**  
add Stationery Photocopying/Faxing and Greeting Card  
Specialist and you have

**JG Riley, 90 Locksway Road, Tel. 9273 1574**

Open Mon-Sat 06.30 to 18.30 (Lottery 19.30) Sun. 06.30 -13.00

**M.S.KING & SON – 273 Milton Road. Tel: 023 9275 2015**

High class butchers. Fresh cooked meats.

**NEW HOURS**

Closed Monday. Wed: 8.30 am to 5 pm,

Tues/Thurs/Fri/: 8.30 am to 5.30 pm Sat. 8.00-4.00pm

Free delivery in local area



Prints and original paintings of Milton, Eastney and  
Portsmouth by local artist John Pearson. Visit  
[www.johnpearsonartist.co.uk](http://www.johnpearsonartist.co.uk) phone 02392 828998





## GUIDE TO LOCAL SERVICES IN MILTON



**STEPHEN HARDHAM CARPENTRY**  
For all your carpentry needs no job too small.  
Honest, friendly and reliable service  
Phone 07747 721427 for a free no-  
obligation quote



**THE JOHN DOYLE PARTNERSHIP** – Accountancy Services  
Marian House, 62-64 Priory Crescent. Tel/Fax:023 9261 0450  
Payroll and accountancy services for small businesses, sole  
traders, partnerships and limited companies.

Contact Kevin Doyle

[www.thejohndoylepartnership.com](http://www.thejohndoylepartnership.com) e-mail [info@thejohndoylepartnership.com](mailto:info@thejohndoylepartnership.com)



### Beginners' Spanish Lessons in Milton/Southsea

Face-to-face lessons for those wishing to get started in Spanish. Home visits or  
meet somewhere public; whatever works for you. Group sessions can be  
arranged if you want to bring a friend.

Free trial lesson! Call or text Neil on **07590 430340** for details.



Exclusive dog boarding just for your dogs.

**07902 264 918**



Local home visit cat sitting service.

**07793 108 307**

[www.purrfect-company.com](http://www.purrfect-company.com)

### DIPEST PEST CONTROL LIMITED

All types of pest eliminated – No more than £50

Mr Simon Houghton MD, MRIPH, IMIFM, MBPR( Pest Control) Field  
Biologist

Hope House, 19 Revenge Close, Southsea, PO4 8YE

PHONE (023)9235 8692 MOBILE 07748 791 248

[dipestpestcontro@ntlworld.com](mailto:dipestpestcontro@ntlworld.com)

**ADVERTISING RATES** Contact Pam Pritchard (07837 929385)

Full page £100. Half page £50. Directory entry £15.

for your next advertisement [pammatthews2010@gmail.com](mailto:pammatthews2010@gmail.com)

## FORUM ISSUES

A founder member of the Milton Neighbourhood Forum Committee John Couch became its Treasurer in October 2001. He had always been involved in work for the local community and brought a wise head, trusted advice and good accounting to the Forum's funds. He has administered grants, overseen the viability of publication of 64 issues of Milton Matters which needs advertising income now to bring it to your door. John in his 80's has finally persuaded us he must be allowed to retire. It is the Forum's AGM on June 13 and we shall reluctantly say 'goodbye' to John as our Treasurer but 'thanks for a job well done'

Any nominations for the Forum Committee should be sent to [MiltonNForum@aol.com](mailto:MiltonNForum@aol.com)

Speakers at the next Forum have been invited to cover the topics advertised on the agenda to bring you up to date with local issues.



**IT'S A DOG'S LIFE –  
professional dog grooming salon based in  
Milton.**

**All dog grooming services provided in a purpose built grooming salon.**

**All dogs are groomed on a one-to-one basis.**

**Only your dog is in the salon at that time.**

**City & Guilds trained groomer. Home dog boarding also available**

**Call Sarah – 07716 124932**



*Organic Natural  
Health & Beauty*

**CHERRY ORCHID BEAUTY- NEALS YARD REMEDIES  
ORGANICS**

**Consultant Beauty/Massage Therapist- AMY 07530 000821**

**Mobile/Home Based Milton, Southsea**

**Offering Gel II, OPI, Neals Yard, Manicures, Pedicures,**

**Callus Peels, Facials, Threading, Tinting, Lash Lifts,**

**Waxing, Neals Yard Facials, Indian Head, Pregnancy, Hot**

**Stones, Massage, Swedish, Aromatherapy Massage. Experienced & Qualified**

visit [www.cherryorchidbeauty.co.uk](http://www.cherryorchidbeauty.co.uk) or Facebook cherry orchid beauty



# sids



**Barbershop**

We pride ourselves on giving you the best experience in your local Salon. We cover a range of styles to suit all.



# sids ladies

*Wedding and Prom hair*

*Matrix and L'Oréal colours*

*Come in and chat to our friendly team*

**9/11 Locksway Road, Milton**

**02392 291150**



## MILTON NEIGHBOURHOOD FORUM COMMITTEE

[MiltonNForum@aol.com](mailto:MiltonNForum@aol.com)

Janice Burkinshaw – Chair  
Dave Willcox – Vice Chair  
John Couch – Treasurer  
Rod Bailey MNPF Chair  
Margaret Nicholas (Secretary)  
Ian Clark  
Karen Cooper  
Paul Docking  
George Dominy  
Dominic Goodyear  
Rajah Ghosh

### Ward Councillors – Milton

#### Cllr Will Purvis

6 The Parkway,  
Portsmouth, PO3 6GQ  
(07590 282135)

[wapurvis@me.com](mailto:wapurvis@me.com)

#### Cllr. Ben Dowling

4 Hollam Rd, Milton  
(0754 0947364)

[btldowling@gmail.com](mailto:btldowling@gmail.com)

#### Cllr Gerald Vernon-Jackson

39 Lindley Ave., Southsea  
(02392 834551)

[geraldvj@gmail.com](mailto:geraldvj@gmail.com)

Peter Harling  
David Jordan  
Pam Pritchard  
Lyn Mills  
Peter Mills  
Christine Neal  
Reg Puntis  
Larry Nicholas (Co-opted)  
Karen Potter (Co-opted)

Martin Silman

### Ward Councillors - Baffins

#### Cllr. Darren Sanders

Flat 6, 92 Victoria Road North  
Southsea, PO5 1QE  
(07740 680612)

[darrensanders59@gmail.com](mailto:darrensanders59@gmail.com)

#### Cllr. Lynne Stagg

71 Highgate Road, Copnor  
(02392 780245)

[lynne.stagg29@gmail.com](mailto:lynne.stagg29@gmail.com)

#### Cllr. Jeanette Smith

[JeanetteSmith@portsmouth.libdems.org.uk](mailto:JeanetteSmith@portsmouth.libdems.org.uk)

(07557 339467)

*Please contact any Forum Representative or Ward Councillor for more information or assistance*

*If you would like to be a Neighbourhood Forum Representative please write in to the Neighbourhood Forums e-mail address:-*

[MiltonNForum@aol.com](mailto:MiltonNForum@aol.com)

Supported by



**Portsmouth**  
CITY COUNCIL

The Neighbourhood Forum is responsible for editorial content, design and distribution of Milton Matters.  
Printed by Bishops Printers