

MILTON MATTERS

Issue No. 59

Milton Neighbourhood Forum

Oct. 2016



***'Five Loaves and Two Fishes' from Christ Church, Milton United Reformed Church
and Bransbury Art Group Art and Flower Festival
2016 – more on page 12***

Wednesday 19 October 7.00 pm

Mary Rose School, Gisors Road, off Locksway Road

NEXT FORUM AGENDA

Update on St James Hospital, Neighbourhood Plan and local issues

HEALTHWATCH

Policing in Milton

FORUM MINUTES 15June2016

Janice Burkinshaw, Chair, opened the meeting reporting that sadly Peter Harling, has had to resign from the committee.

CITY COUNCIL TRANSPORT PLANS

Pam Turton from Portsmouth Council explained that the city has significant growth ambitions with plans for both employment and 8,000 more homes so road planning is focussing on junctions to get the most out of the network. She introduced Lee Gilbert, Traffic Engineer who informed residents of proposals to upgrade the Council's Traffic Control Centre plus controls at eleven road junctions across the city. The cost of the proposals is in the region of £1.3 million and they are designed to keep traffic moving and to limit waiting times. This will be achieved using Microprocessor Optimized Vehicle Actuation (MOVA) control systems which will respond to real-time traffic situations instead of working to time-fixed traffic lights. The junctions at Velder Ave./Milton Road/Rodney Road; St Mary's Hospital; and Bransbury Park are included in the scheme. There was discussion about the merits of the changes – one member of the audience stated that certain of the council proposals contravened legislation.

He explained that the designs for the junction changes were at the early stages and he would be pleased to attend a future meeting to consult with residents on the details. Lee also demonstrated a new system which operates by reading drivers' smart phone signals to plot journey times around key parts of the city to provide information on traffic progress throughout the day.

AIR QUALITY

Louise Bevan from the City Council Public Health section spoke about air quality management in the city and stated that there are localized nitrous dioxide issues in Portsmouth. Poor air quality is No. 7 in a list of serious risks to health which can shorten life and aggravate asthma etc. In 2005 there were thirteen (13) air quality management (AQMA) areas across the city but eight (8) of these were revoked in 2009 when their quality improved. Locally our AQMA No 9 is at Velder Avenue and has not exceeded average guidelines for 3 years..

Since 2010, there have been infrastructure changes, with a new behavioural approach to air quality management and links to the local transport plan. An air quality strategy will be introduced during 2016/17 involving local businesses, public health and the city council. Friends of the Earth have concerns about air quality and hold regular meetings on Monday evenings and it was suggested the Forum contact them for advice. Members of the audience were surprised that more effort is not being made to effect simple, quick, pay-back strategies such as instructions to switch-off engines when in traffic queues (of which there are plenty on our network)

MILTON NEIGHBOURHOOD PLAN

Rod Bailey, Chair of the Milton Neighbourhood Planning Forum, gave an update about its ongoing work. He confirmed that local residents have stressed the need for recreational or health/education facilities in preference to housing and that basic infrastructure needs must be provided such as GP facilities - this has been recognized

FORUM MINUTES June -cont

NEIGHBOURHOOD PLAN - CONT.

by the Care Commissioning Group (CCG) in discussions.

Residents also feel that St James' Hospital could ideally facilitate mental health, dementia and residential care services and Rod will be presenting a revised plan to the city council in the Autumn prior to the plan being finalized. The Homes and Communities Agency (HCA) is now involved and hopefully will work with the Forum in a positive manner to achieve an acceptable final plan. There are still ongoing issues with regard to tree preservation orders.

MILTON'S CIL FUND

The Chair suggested several new projects felt appropriate to fund from Milton's Community Infrastructure Levy (CIL), including providing an air quality monitoring station at Milton School to measure particulate levels in this key area on an extremely busy road. In addition, a path at Bransbury Park could be extended to link with Kingsley Road and be large enough to accommodate vehicular access.

A further idea is to provide a vehicle-activated speed sign on Locksway Road.

The Chair asked if any residents would like to volunteer to undertake a further traffic survey, similar to the earlier one when traffic flow at the Locksway Road junction and the Velder Avenue/Milton Road/Rodney Road junction was monitored in 2014 to give up-to-date information.

HONORARY TREASURER'S REPORT

The Chair presented the report prepared by the Honorary Treasurer, confirming expenditure on various projects during the year and the balance held at the bank as at March 2016. The accounts have been audited independently and there is still a vacancy on the committee for a replacement Honorary Treasurer.

The chair then reported on the successful Picnic on the Green held on Saturday 11th June 2016 and indicated that, to date, the expenditure appears to exceed income by about £150 (but this figure is subject to amendment and verification when final invoices are received).

ELECTION OF OFFICERS

This meeting being the Annual General Meeting of the Forum, Angela Shepard from Portsmouth City Council was in attendance to conduct the election of a new committee and officers to serve for the ensuing year. With the exception of one current committee member (Peter Harling) the existing committee members were re-elected, with Janice Burkinshaw re-elected as Chair.

The existing Vice Chair (Dave Willcox), and Honorary Minutes Secretary (Margaret Nicholas) were re-elected, The position of Honorary Treasurer remains vacant (although John Couch will continue in the role until a replacement Treasurer is found). As the meeting had to close, the Chair limited her report on the past year to thanking all who have served on the committee and the Neighbourhood Planning Forum for their commitment and hard work on behalf of residents.

YOUR LOCAL FAMILY LAW SOLICITOR



RUTHERFORD SOLICITORS

257 MILTON ROAD

PORTSMOUTH PO4 8PQ

Tel: 02392 735700

www.rutherfordsolicitors.co.uk

VERY COMPETITIVE FIXED FEE OPTIONS
AVAILABLE IN FAMILY, EMPLOYMENT AND CIVIL LAW

WE OFFER **LEGAL AID** ADVICE IN FAMILY LAW (CHILDREN (INCLUDING CARE PROCEEDINGS), DOMESTIC VIOLENCE, DIVORCE, FINANCIAL MATTERS ETC).
THEREFORE IF YOU ARE ELIGIBLE YOU MAY QUALIFY FOR FREE LEGAL REPRESENTATION.

We hold the Specialist Quality Mark

FANTASTIC OFFER ON WILLS AND LASTING POWER OF ATTORNEYS FROM 1.9.16 – 30.10.16 (T&C's apply)

Straightforward Individual Will: **£130.00 (usual price £165)**
Straightforward Joint/Mirror Will **£190 (usual price £265)**

Offer on Lasting Power of Attorney - **£180!** (excludes registration and OPG fee) – (usual price £350) - Please telephone us or call in to the office for further details.

FLOOD DEFENCES CLOSE TO COMPLETION



The last sight of the chalk bund on Milton Common before was covered with topsoil to be planted with wild flowers and shrubs

The new coastal defences being built at Milton Common is the second phase of the North Portsea Island Coastal Defence Scheme to reduce the risk of coastal flooding to homes, businesses, and critical infrastructure in North and Eastern Portsmouth over the next 100

years, providing one of the highest standards of defence in the country outside of London.

The new 750m long rock revetment has now been fully constructed. Over the past weeks more than 6000 tonnes of Norwegian granite have been used to build this structure to its design specification. The completed revetment has been completed with two sets of concrete steps to maintain safe egress from the foreshore. Beach material in front of the revetment has also been sorted with large amounts of rubble and debris removed to improve the aesthetic quality of the beach. Work is now underway on the installation of a public dual-use path which will run alongside the new frontage. The removal of Great Salterns Quay is nearing completion. Excavation of material from the Quay's internal body is now complete and much of the remaining external steel piling has now been removed to restore intertidal habitat.

Earth bunds set back into the common designed to provide a secondary defence against extreme flood events have been steadily built up over the past few months wholly from recycled chalk extracted from Great Salterns Quay. They have now reached their final design level and are currently being finished with formal foot paths at selected locations along their crests. These will tie in to the existing footpath network across the common and allow access to elevated positions from which panoramic views across the lakes and Langstone Harbour can be enjoyed. Once all activities



on site have been completed the whole works area will be re-landscaped to ensure that its natural character is restored and enhanced. The area of works are being topsoiled and re-planted with a mix of meadow grasses, wildflowers, trees, hedges and shrubs. specially selected to increase natural biodiversity - Crab apple, Cherry Plum, Elder, Sea Purselane, Sea Beet, Fennel, Teasel, etc.,

Access to the Common should be restored in November when this planting is complete but the resident swans have enjoyed a walk already!

5

BOXALLS BATHROOM CENTRE

Creating beautiful bathrooms for over 50 years!

Supplying to the Public & Trade offering great value for money and expert advice on everything for the bathroom!

- 14,000 sq ft of Bathrooms
- Bathroom Furniture Specialists
- 400 Suites in Stock
- Instore Planning Service
- Over 60 Displays Including many elegant en-suite settings
- Customer Parking
- A family owned independent business



A Showroom you will like, prices you will love!

Do visit us, you won't be disappointed

Open: Monday - Thursday: 9am - 6pm, Friday: 9am - 7pm, Saturday: 9am - 5:30pm

139 -145 Copnor Road, Portsmouth, Hants, PO3 5BS

Tel: 02392 694106 www.boxalls.co.uk



Milton Village Community Association

Milton Village Hall, 182 Milton Road, Southsea, Hants, PO4 8PR

Tel. 023 9287 3788 Email: miltonvillagehall@gmail.com

Office: 0930-1230 Mon-Fri Website: www.miltonvillagehall.co.uk



Pure Ground Coffee Shop at Milton Village Hall

Enjoy real coffee & delicious food Monday to Saturday 0900-1630!

Current Regular Activities at Milton Village Hall

2 Halls & Meeting Area for hire. Ideal for children's parties, from just £30!

Monday	Tuesday	Wednesday	Thursday	Friday	Sat	Sun
Music Mad	Music Mad	Music Mad	Weight Watchers	Yoga	Tots Soccer	Keep Fit
Little StepsGym	Little Steps Gym	Little Steps Gym (am)	Little Steps Gym	Cribbage Club	Little StepsGym	AA
Curling	Beetle Drive (m)	50+ Keep Fit	Quiz Time (m)	Tai Chi		Light House
Diddi Dance	Advanced Cribbage	Little Steps Gym (pm)	Positive Pups	Creation Station		Chapel
Zumba	Yoga	Lighthouse Church	Pilates	Beginners LineDance		Positive Pups
Tap Dancing	Boxercise	Keep Fit (Aerobics)	Pet Talks	Yoga		Circle Dance
			Line Dance			

Macmillan Coffee Morning
Fri 30 Sep
Small Hall
10am-12noon

AGM
Wed 26 Oct 7pm
With a talk from the Ambulance Service on public defibrillators in Milton & Eastney.
Refreshments Served

SUPPER & SINGER
Sat 19 Nov
Just £10 (£15)
Great entertainer & 2-course supper!
Please book in advance

CHRISTMAS FAYRE
Sat 26 Nov
12 to 3pm
Crafts * Gifts
Cakes * Raffle
Tombola & Games

WINTER 2016-17 & BEYOND !
Longleat Festival of Lights

** Robin Hood Pantomime (Mayflower)*

*Guildford Christmas Shopping * Motown The Musical*

*42nd Street (London) *Thames Showboat Dinner Cruise & Tower Hotel*

*Paris on the Seine * Isle of Man * Rome & Sorrento!*



Like us on Facebook for latest news & info!!

KEEP MILTON GREEN SUCCESS



On Sunday, 17th July Milton residents turned out in force to see for themselves the damage already done by development at the St James Hospital site. In an event organised by the Keep Milton Green group, visitors were guided around the grounds to witness how much green space has been lost and to see the site of a current planning application by Solent NHS Trust.

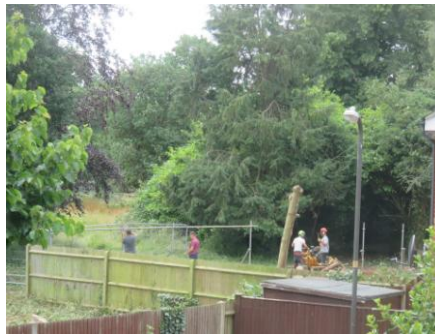
Tree Warden and KMG Administrator Kevin Doyle – who led the Tree Walk – was delighted with the support and believes this was a crucial day for the campaign. He feared that people would not turn out, taking a view that the frequency of planning applications in our area would lead them to assume these were 'a done deal'. This was not the case with over 200 people joining the walk. Due to the high number of objections to Solent NHS Trust's application to fell over 50 trees including the silver birches shown below in the driveway to the Harbour School, the Council could not support the planning application and Solent NHS Trust withdrew it. Permission had already been granted to fell 2 birch trees which has now been implemented.

We understand that a modified application which will NOT involve the loss of these trees but which will introduce passing places instead on the driveway is now likely. KMG are delighted that so many people have been prepared to voice their concerns and raise objections which have saved the trees this time.

Residents also viewed the land purchased by Crayfern Homes to build 30+ houses. This site with its extensive tree cover, had been home to local foxes.
Cont....



KEEP MILTON GREEN SUCCESS *cont.*



The Crayfern Homes site before work started and now (below)



Kevin reported that the change to this site provided the biggest shock on the walk. "Looking at this cold barren landscape brings home what really happens behind the scenes."

The threat to the St James Hospital site in the UK's most densely populated city has united the community in its resolve to protect this much-loved and needed green space. Keep Milton Green does not stand alone in its campaign. It also

has the support of the Milton Neighbourhood Forum and Milton Planning Forum www.miltonplan.org.uk
keepmiltongreen@hotmail.com Tel. 074 4790 4224
e-mail



Keep Milton Green



@keepmiltongreen

9

Email: keepmiltongreen@hotmail.com
Tel: 074 4790 4224



PICNIC ON THE GREEN 2016



This year's event coincided with HM Queen's Official 90th Birthday and the stallholders entered into the spirit of the day by displaying their red-white-and-blue. Following the excellent article in The News Community Section, by Father Paul Armstead, from St James Church, in which he promoted both our event and the Church Fete the following week, the numbers attending the Picnic on the Green swelled to include people from other parts of the City who complained they had not been invited before! Of

course, it was our intention when staging our annual Picnic that people from Milton would walk to the Green and enjoy the lovely setting, but clearly, lots of others want to enjoy it too. The Dog Show was so popular, each category had to be run twice by Justyn Loveridge. The Lord Mayor and Lady Mayoress attended this year and we were handsomely entertained by the ever-popular Pompey Pluckers. Local traders Portsmouth Fruit & Flower, About Time, Shaw Trust, Bransbury Butchers, Kings Butchers, Tesco, Milton Wives Group and Committee members all donated generously to the tombola which brings in money to cover the costs of the event.

We would be lost without Annette's contribution in making so many delicious cakes of course!

10

10



PICNIC ON THE GREEN 2016



Rob Smith's goal saving challenge



Quacking good fun!



Family picnics are just the thing



The Lady Mayoress's winner

Face changing experiences!



Here it comes!!!



ART AND FLOWER FESTIVAL 2016

This Biennial event was put on by Christ Church Milton United Reformed Church (URC) and Bransbury Art Group based at Eastney Community Centre. Over 300 people attended raising £557 for the Bible Society.



The theme for the flower arrangements was 'Numbers' and many groups within our community contributed - Christ Church Milton URC, StJames Church, Devonshire Ave Baptist Church, Little Spinnakers, Moorings Way Infants, Milton Park Juniors, Brownies, Sarisbury Green URC, Fareham URC, Monica Simpson and Sophie Baber. It was not easy to pick some examples for you from the stunning entries.



HOW MANY BIRDS ON THE COMMON?



I was privileged to grow up living opposite Milton Common and to me it was and still is a fantastic wildlife site. I have been an ornithologist for 38 years and the Common has played a big part in my passion for the hobby.

I am currently undertaking a bird count survey of the Common in response to a Milton Forum meeting that discussed the possible extra homes being built at the St James's Site. That would mean an increase in people using the Common and consequently, this would put pressure on the site. As no bird survey had been

undertaken I felt compelled to find out which species are using the Common and count numbers of species. This will mean finding trends over time and discovering the effects of increases of people using the Common.

It has been touted that the Common will be designated a Nature Reserve by PCC. It already has SPA status on the Harbour side. PCC have produced a management framework for the site which has involved a survey of dog walkers along the shoreline. The framework has involved site surveys but appears to suggest that disturbance to birds just off the shoreline is a problem. I have knowledge that there are concerns over wading birds in these areas being affected by dogs off the lead. Unable to gain weight for migration has been suggested but I don't buy this theory. Most wading birds here are resident through the year and will congregate further out on the mudflats or move down the shore. The Brent Geese will continue to feed on the playing fields at Furze Lane and Portsmouth Sixth Form College so long as these sites have no further disturbance.

My concern is that extra people moving into the centre of the Common will disturb a high percentage of both resident breeding birds and migrant species using the Common both on grassland and the scrub/bramble areas. This has not been envisaged but my surveys should help to find out what areas need protection; if species are disappearing or increasing; promoting mitigation; and where birds are breeding. The skylark used to be a common bird on this site but to date I have not found one on the surveys undertaken since November 2015. This needs addressing and could be reversed but may be hindered by increased use of the centre of the Common. I understand the need for a balance here between recreation use and nature. Without the correct balance, important bird species could be severely affected with loss of biodiversity. Without birds on the Common, we will not be able to enjoy birdlife in our gardens like the Great Tit chick pictured above fledging this year.

DAVE WARNER (birdman.dave@hotmail.co.uk)

THE CHAPEL ON ST JAMES' HOSPITAL LAND



How many of you know of this delightful little chapel at St James'? The memorial stone was laid in 1876 by our Mayor William Pink, the chapel was finished being built in 1879, the same year the Asylum opened.

Now in 2016 with all the closures and moves there is not one single psychiatric patient or member of nursing staff left in the large red-brick hospital. When the wonderful Minister for Adult Mental Health in

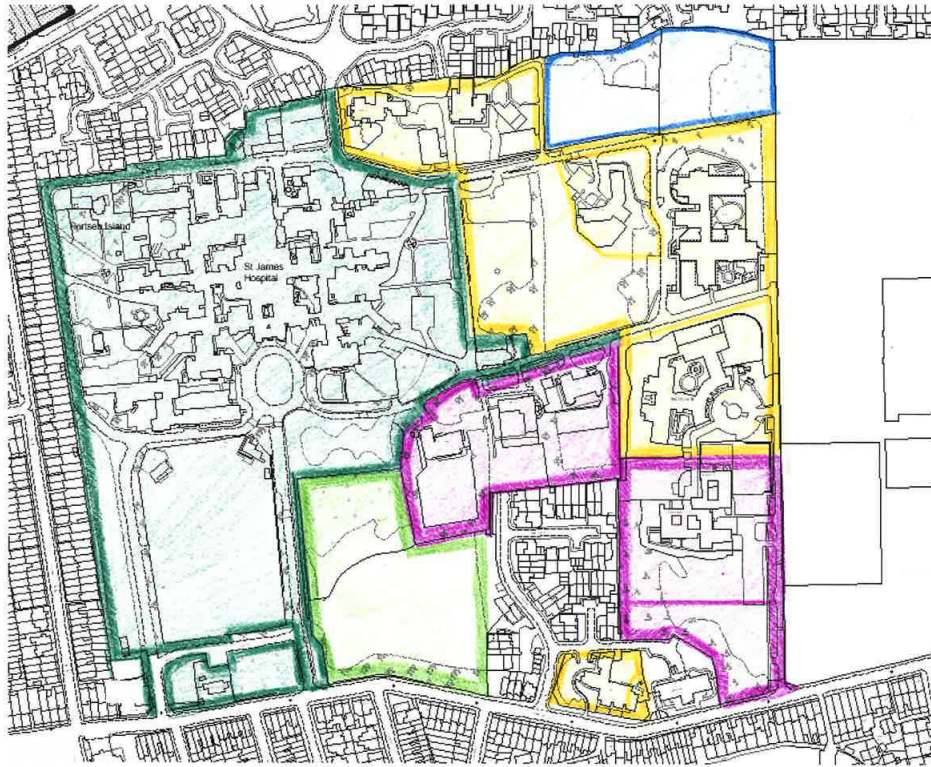
the City Rev. Eric Massey left to live in Gloucester six years ago, all went from the chapel. He was not replaced and there is no Minister for Mental Health locally.

In June 2010 I wrote in Milton Matters about the chapel, saying that it was open for many uses - services/quiet times/relaxation and musical events - it was used by patients/carers and members of the public. Eric made sure that this place of God was used for Godly things, it brought joy, peace and happiness to many. Now it mostly remains unused and unloved. I open it each year on Picnic on the Green Day, to show it to anyone who would like to come and see this pretty little part of our local history which is a Grade 11 listed building. When I asked Sue Robson, NHS Property Services for permission to open it for the Picnic, she was also asked if a young friend of mine who had been christened in the chapel many years ago, could have her daughter Amelia christened there also, and this was agreed but my friend had to provide her own minister. This leads me to suggest perhaps it could be used more for other christenings/marriages/funerals. It is lovely there, it has A kitchen and loo, and a memorial garden next to it where one can sit and reflect. Let's hope we can save this chapel! Thelma Turner-Hill *Although the Chapel is closed for repairs its garden is being beautifully maintained with plants kindly donated by Portsmouth.Fruit & Flower and is being used by residents and carers.* 14

14141414MA TURNER-HILL -

LIGHTFOOT LAWN

ST JAMES' HOSPITAL -WHO OWNS THE LAND?



Local residents have been asking what the situation is at present with the site. We have obtained this plan. We hope to be able to report on further progress at the Open Forum on 19 October.

Key

- NHS Property Services Ltd
- Homes & Communities Agency
- Solent NHS Trust
- Portsmouth City Council - St James Field
- Crayfern Homes building 32 houses

GUIDE TO LOCAL SERVICES IN MILTON



MOTOTECH – Unit 8, Warren Avenue Industrial Estate

For all your mechanical requirements MOT's and recoveries available. Tel: 023 9287 4784

Specialists in Performance and Luxury Cars

BJM UPHOLSTERY
107 Guildford Road,
Tel: 02392 822642



LTD
Fratton

Foam cut to size, cushions filled, also

re-upholstery



*Organic Natural
Health & Beauty*

CHERRY ORCHID BEAUTY- NEALS YARD REMEDIES ORGANICS

Consultant Beauty/Massage Therapist- AMY 07530 000821

Mobile/Home Based in Milton

Offering Gel II, OPI, NEALS YARD Manicures, Pedicures, Callus Peels, Facie

Threading, Tinting, Lash Lifts,

Waxing, NEALS YARD Facials, Indian Head, Pregnancy,

Swedish, Aromatherapy Massage. Experienced & Qualified

visit www.cherryorchidbeauty.co.uk or Facebook cherry orchid beauty



CTN (Confectionery, Tobacco & Newsagent)
add Stationery Photocopying/Faxing and Greeting Card Specialist and you have

JG Riley, 90 Locksway Road, Tel. 9273 1574

Open Mon-Sat 06.30 to 18.30 (Lottery 19.30) Sun. 06.30 -13.00



M.S.KING & SON – 273 Milton Road. Tel: 023 9275 2015

High class butchers. Fresh cooked meats.

Open Mon: 8 am to 1.30pm, Wed: 8 am to 1 pm,

Tues/Thurs/Fri/Sat: 8 am to 5.30 pm

Free delivery in local area

“A lovely moment of Picnic on the Green” Prints of Simon Whitcomb's painting shown in the last magazine, are on sale £20 at the next Forum or from simonwhitcombe@gmail.com phone 07985 327305

GUIDE TO LOCAL SERVICES IN MILTON



STEPHEN HARDHAM CARPENTRY
For all your carpentry needs no job too small.
Honest, friendly and reliable service
Phone 07747 721427 for a free no-obligation quote

THE JOHN DOYLE PARTNERSHIP – Accountancy Services
Marian House, 62-64 Priory Crescent. Tel/Fax:023 9261 0450
Payroll and accountancy services for small businesses, sole traders, partnerships
and limited companies. Contact Kevin Doyle
www.thejohndoylepartnership.com e-mail info@thejohndoylepartnership.com



Shaw Trust Horticulture, St James' Hospital
Locksway Road – Phone 023 92737724
Open Mon-Thurs. 8-4pm; Friday 8-12.30pm
garden services and Landscaping

We sell a range of shrubs, perennials, herbs, indoor
plants compost and bark + handmade garden furniture
We can deliver locally

ping zone
PC Repairs & Upgrades

- PC & laptops repairs
- Virus and spyware removal
- Custom build and upgrades
- Networking & WiFi
- Data recovery
- and much more

Your local PC repair man based in Milton. If you need help with a sluggish PC or even just setting it up, call Dave on **07944 917 293**.
No job too big or small, no fix no fee

Art & Framing – we have moved to new premises
265Milton Road

A Big Thank You to all our customers www.artandframing.net

ADVERTISING RATES Contact Pam Pritchard (02392 754188)
Full page £100. Half page £50. Directory entry £15.
for your next advertisement pammatthews2010@gmail.com



ENJOYING MILTON PARK

Do you remember two dogs, Molly and Pickles who appeared in a previous issue of Milton Matters, riding in a push chair? Sadly Molly has died but Pickles is now 14 and is pictured here, enjoying the recent **Paws in the Park** event at Milton Park. The Police were present to microchip dogs and bycles and local vet Justin Loveridge from Vets4Pets supervised dog agility activity which they all thoroughly enjoyed showing off their skills and tricks.

Milton Park offers those who would like to learn about gardening and work on our local park once a month to join the **Friends of Milton Park**. The friendly group meets at the Milton Village Hall at 1pm on the third Wednesday of the month to care for flower beds and to improve the appearance of the park. Paul Miles (paul.miles@portsmouthcitycouncil.gov.uk) organises the events and would welcome some new volunteers so that the activity at the park can be extended by planning and planting the displays, putting daffodils in this autumn at the foot of all the trees, and truly making this a Community Park whilst enjoying rewarding exercise and friendship. Don't be afraid to contact him or turn up at the Hall.

PORTSMOUTH & SOUTHSEA TREE WARDENS

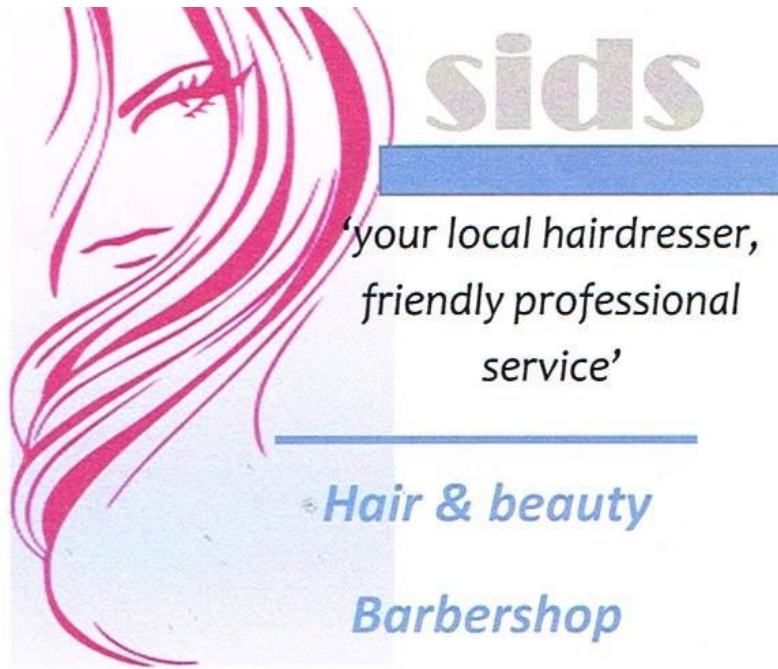
Pauline Powell, co-ordinator of the local Tree Wardens, organised a Tree Walk at the Picnic on the Green this year. Pauline and her group are pictured below looking at the Golden Oak planted by the Forum for the Queen's Golden Jubilee in the drive of St James.



You might also like to know that the Wardens planted and dedicated two Alders to Myrtle Stubbs in Bransbury Park as the tree wardens benefited from part of her legacy. There is a plaque there to her memory. Following up the Jubilee theme, they also planted a White Mulberry in Milton Park for the Queen's Diamond Jubilee. They do a lot for the City's trees, always busy!

New tree warden members always welcome please contact Pauline. www.portsmouthtree.org.uk
[www.twitter.com/portsmouthtree](https://twitter.com/portsmouthtree)

NEXT OPEN FORUM – Do come along to Mary Rose School to put questions to our speakers and get upto date information including HEALTHWATCH and how they help us with social care and health issues. 7pm – 9pm on Wednesday 19 October



Creative cuts & Colouring

Wedding & Prom hair

02392 291150

Gents open 6 days a week

Ladies closed Wed

9/11 Locksway Road Milton

MILTON NEIGHBOURHOOD FORUM COMMITTEE

MiltonNForum@aol.com

Janice Burkinshaw – Chair
Dave Wilcox – Vice Chair
John Couch – Treasurer
Rod Bailey MNPF Chair
Margaret Nicholas -Secretary
Ian Clark
Paul Docking
George Dominy
Dominic Goodyear
Peter Harling

Ward Councillors – Milton

Cllr Will Purvis
6 The Parkway,
Milton, PO3 6GQ
(07590 282135)
wapurvis@me.com

Cllr. Ben Dowling
4 Hollam Rd, Milton
(0754 0947364)
btldowling@yahoo.co.uk
Cllr Gerald Vernon-Jackson
39 Lindley Ave., Southsea
(02392 834551)
geraldvj@gmail.com

David Jordan
Pam Pritchard
Lyn Mills
Peter Mills
Reg Puntis
Larry Nicholas (co-opted)

Ward Councillors - Baffins

Cllr. Darren Sanders
58 St Mary's House
St Marys Rd, Portsmouth
(02392 838963)
darrensanders59@gmail.com

Cllr. Lynne Stagg
71 Highgate Road, Copnor
(02392 780245)
lynne.stagg2@gmail.com
Cllr. Stephen Hastings
3 Homeheights, Clarence Pde,
(07870 127024) PO5 3NW
cldr_hastings@outlook.com

Please contact any Forum Representative or Ward Councillor for more information or assistance

***If you would like to be a Neighbourhood Forum Representative please write in to the
Neighbourhood Forums Freepost address:-***

FREEPOST (RTLJ-ARYT-ECKC) PORTSMOUTH PO1 2AR

or e-mail MiltonNForum@aol.com

Supported by



Portsmouth
CITY COUNCIL

The Neighbourhood Forum is
responsible for editorial content, design and distribution of Milton
Matters. Printed by Bishops Printers