

MILTON MATTERS

Issue No. 54

Milton Neighbourhood Forum

February 2015



NEW POST
IN CENTRE PAGE

Forum Committee Member Pete Harling noting peak traffic flows through Milton during the volunteer survey in November 2014. Come to hear the results from the Council's Traffic Consultant.

PLEASE NOTE CHANGE OF DAY OF MEETING TO MONDAY

NEXT FORUM MEETING

MONDAY 23 February 7.00 pm

At Mary Rose School, Gisors Road, off Locksway Road

REPORT ON MILTON TRAFFIC SURVEY

THE FUTURE OF CORBEN LODGE

WHEN WILL LOCAL SEWAGE DISCHARGES CEASE?

UPDATE by HEAD OF PLANNING ON MILTON PLANS

FORUM MINUTES – 17 Sept.

COMMITTEE ACTIVITY SINCE LAST PUBLIC FORUM MEETING

The Chair gave a brief update on recent forum activity, including the submission of applications for funding to enlarge the local skatepark facilities; updates and information from Roger Inkpen about access on the St James' Hospital site, and a presentation from a neighbourhood watch representative.

PLANS FOR ST. JAMES' HOSPITAL

Andy Strange spoke again about the process for disposal of property and possible future plans for housing to be provided on further areas within the hospital campus. Several buildings on site are being retained for mental health purposes. His presentation mirrored that of his earlier one at the public forum meeting held on 18th June 2014, and he stated that phase 1 covers the sites of Fair Oak, Yew Tree House, The Beeches and the Harbour School, leaving the St. James' Field on its own within a housing area. This phase could have around 100 homes (a reduction on 120 mentioned before) and traffic surveys have been undertaken to assess traffic flows into the site. The Light Villa Site is to be sold imminently for 30 homes – a reduced figure due to protected trees. The further 210 homes would be in the main St James (listed) building through conversion and additions when the office staff leave.

As in earlier meetings, residents and local councillors stated they have grave concerns about the development, particularly infrastructure inadequacy.

Particularly regarding vehicular access via Locksway Road, the lack of school places for new families and other support services. It is recognized that the NHS is hoping to reduce its running costs from £6 million to £3 million by disposing of land at St. James' Hospital, but any such move will be at the expense of local residents. Residents were sceptical of NHS traffic survey figures that 4500 vehicles enter the site each day and that this would be less when the site is developed. They also felt that the NHS had not taken due regard of the local environment and facilities, merely concentrating on the financial benefits to the NHS. They were told that surveys of protected species were ongoing. Residents felt this was inadequate as the whole site had an integrated set of wildlife.

Questions were raised as to where the 4500 vehicle movements would go when the hospital buildings were no longer needed and staff moved out. They were told some to St Mary's and others in spare office blocks such as Civic Offices. The scarcity of parking at St Mary's was highlighted by residents.

Dr Pauline Holmes MCIEEM from Hampshire and Isle of Wight Wildlife Trust (HIOWWT) spoke about the need to preserve the local habitats for winter birds such as Brent Geese and the impact on them from further building development since the species are site faithful. She stated that the local authority is required to take into account, the impact on wildlife when considering planning applications.

FORUM MINUTES – 17 Sept.

Dr Holmes encouraged residents to make notes on wildlife movements and report such sightings to the Trust www.hiwwt.org.uk/species-groups-and-records/submitting-records and also via Hampshire Ornithological and Hants Biodiversity Info Centre. On the HIWW Wildlife Trust website there is information on how residents can follow their advice on how to write a letter of response setting out what you need to include. Also a guide to protected species explaining the legal system for these, plus a link to Natural England site with a list of species protected by the planning system, legislation for each, and downloadable sheets. The Trusts Planning pages can be found <http://www.hiwwt.org.uk/we-influence-planning-systems> The Waders and Brent goose strategy can be downloaded from <http://www.hiwwt.org.uk/we-produce-publications-and-reports>. In determining applications for these sites Portsmouth will have to take account of their local plan (2012) which has a specific policy “PCS 13 A Greener Portsmouth” which is designed to protect wildlife and protect the loss of open space <https://www.portsmouth.gov.uk/ext/development-and-planning/planning/the-portsmouth-plan.aspx> Local Authorities have to take account of National Planning Framework including sustainable development. The three dimensions of which are *Economic, Social & Environmental*” Section 8 – “*These roles should not be taken in isolation because they are mutually dependent*”

This link takes you to the web pages where the document can be downloaded.

<https://www.gov.uk/government/publications/national-planning-policy-framework--2>

Claire Upton-Brown, City Planning Manager spoke about the Milton area sites identified in the city plan for development, many since 2002. She reported on the 2013 consultation stating that only 15 responses had been received from statutory consultees, Forum and members of the public.

Cllr Luke Stubbs, Deputy Leader of the Council, emphasized that the planning process is a judicial one, with strict rules on process, and he informed residents that the local authority is duty bound to take into account any infrastructure inadequacies and wildlife implications when dealing with all planning applications. He explained what is meant by brownfield sites – all urban land is classified thus.

Local Ward Councillors asked to speak on the issue and repeated the option of purchasing the land on which the Harbour School is situated to save the cost to PCC of reproviding this facility in Cosham

A “drop-in” session is being held by Crayfern Homes on Wed. 24th Sept. 2014, at St James’ Hospital to allow residents to view, understand and comment on the plans for development of former Light Villa site for 30 homes.

The general feeling of the meeting was that the hospital is determined to sell land at the site with no regard for the implications of infrastructure problems, wildlife or impact on local residents and their quality of life. Residents should submit comments by 30th Sept. 2014 to planningpolicy@portsmouth.cc.gov.uk

The Chair confirmed that on 20 Sept. leaflets and green balloons will be distributed to residents in support of the new ‘Keep Milton Green’

Facebook 3 sitestrating the need to “Keep Milton Green”. The support of local residents is crucial, and simply attending a meeting is insufficient activity to achieve a positive outcome.



Meeting your needs

No matter what issue you have with your roof we are the experts to contact as we have 20 years' experience. We offer very competitive prices without compromising on quality and we always listen to your needs.

At LM Roofing Ltd we fix your roof to a very high standard whilst offering you a personal service to make sure you get what you want from new roofs to roof repairs

Our roofing services include:

New roofs and roof renewals, roof repairs, flat roofing, cladding, fascias and soffits, leadwork and lead flashings, chimney repairs, storm damage repairs and insurance work, dry verge and dry ridge systems, guttering, gutter cleaning and repairs, roof trusses and more

Why choose LM Roofing

Over 20 years experience, friendly and professional roofers, a personal service tailored to your needs. 24 hour emergency roof repairs, fast and efficient service, competitive prices, free survey and quote, expert advice, domestic and commercial work undertaken

www.lmroofingcontractorshants.co.uk
[email:lmroofing@hotmail.co.uk](mailto:lmroofing@hotmail.co.uk)



SURVIVING THE WINTER CHILLS

On average, most of us get two to four colds a year - while children suffer three to eight. Do you remember as a child, the long days you spent in bed keeping warm and trying to get over a cold? Nowadays we all expect to be well in 2-3 days! Rest, staying in a constant temperature, a sensible diet, stopping smoking, alcohol in moderation, and taking regular exercise can all make a real difference. Here is some guidance from NHS Clinical Commissioning about colds and flu which we hope will help you to stay well this winter, a time when seasonal illnesses are more frequent.

- ✓ **Most cold and flu symptoms can be treated safely at home, and will go away without the need to see a GP.** Antibiotics are NOT effective against these viral illnesses, and may cause side effects
- ✓ **If you want advice a pharmacist can help or access information from a reputable source such as NHS Choices or Self Care Forum fact sheets**
- ✓ **Coughs can last three to four weeks. In adults and older children, cold symptoms last for about a week and a half, and in younger children for up to two weeks. Symptoms are usually worst in the first two to three days, before they improve.**
- ✓ **You can catch a cold by breathing in droplets of fluid containing the cold virus (when someone sneezes), or by touching something that someone has sneezed on, and then touching your mouth or nose. USE THAT HANKIE OR TISSUE! paracetamol, ibuprofen or aspirin can help reduce the symptoms of a cold. Avoid giving aspirin to children under 16 and follow the manufacturer's instructions. Talk to your pharmacist about supplements that may help ease your symptoms**
- ✓ ***Most colds are not serious and get better by themselves. Contact your GP surgery for advice or call NHS 111 if you develop a high temperature (about 29C or 102.2F), which can be a sign of a more serious infection**
- ✓ **Your sore throat should get better within three to seven days (maximum 2 weeks) without the need for treatment by a health professional**
- ✓ **The immune system in your nose is less efficient below 5 C, so keep that scarf over your face when the temperature drops.**

SPECIAL POEM FOR SENIOR CITIZENS!!

A row of bottles on my shelf caused me to analyse myself.
One yellow pill I have to pop goes to my heart so it won't stop.
A little white one that I take goes to my hands so they won't shake.
The blue ones that I use a lot tell me I'm happy when I'm not.
The purple pill goes to my brain and tells me that I have no pain.
The capsules tell me not to wheeze or cough or choke or even sneeze.
The red ones smallest of them all goes to my blood so I won't fall.
The orange ones very big and bright prevent my leg cramps in the night.
Such an array of brilliant pills helping to cure all kinds of ills.
But what I'd really like to know is, what tells each one where to go!

VOLUNTEER TRAFFIC SURVEY



At the last Open Forum in September, our meeting ended with a plea to all to respond to the Council's Consultation on the plans to allocate land at St James Hospital and the University Playing Fields for development for up to 480 homes. The Forum emphasised that the support of local residents is crucial, and simply attending a meeting is not sufficient activity to achieve a positive outcome. The meeting was followed up by a leaflet distribution, a poster campaign to **KEEP MILTON GREEN** and as a result, a huge number of people wrote to the Council before the closing date of 30 Sept. to express their serious concerns. See pages of comments at

the 26 <http://democracy.portsmouth.gov.uk/documents/s5736/Milton%20Sites%20-%20Appendix%20-%20consultation%20response%20table.pdf>

Unlike the previous consultation exercise, the results were reported at a public meeting with the Planning, Redevelopment & Economic Development Cabinet Member, Cllr. Luke Stubbs on 2 December. The meeting heard pleas from Alex Bentley, Cllr Lynne Stagg, Cllr Darren Sanders and Cllr Ben Dowling to listen to residents' concerns. It was also suggested that St James was the site of an old plague pit and may have former patients interred in unmarked graves. The discussion was wide-ranging with alternative sites for housing and traffic problems being aired.

The outcome was that Cabinet Member Cllr. Luke Stubbs

- (1) notes the consultation responses received, and in the light of these,**
- (2) agrees that further work be undertaken to demonstrate whether the proposed level of development is deliverable**

Which means a number of investigations must now be put in place and reported.

A key element to the residents' objections has always been the overloaded road network and the Council agreed that a **Traffic Survey** should be undertaken before decisions are taken on extra housing for the St James Hospital and University Playing Field sites. The Council agreed to engage a Traffic Consultant who would interpret the results of a volunteer-led survey. Volunteers were sought through the new 'Keep Milton Green' Facebook site as well as from Forum committee. We surveyed 13 key Milton junctions during 2 Wednesdays in November in foul wet weather, working 7.30 am – 9.30 am and again 4.30 pm – 6.30 pm proved strenuous and demanding. **Thanks are due to all who helped. Hear the results at the Open Forum on MONDAY 23 February at 7pm at Mary Rose School.** During the survey, we soon became very aware of the poor air quality on Milton Road junctions. The Government are proposing to change the way **air quality** is monitored and we hope to have a speaker on this topic at a future meeting – watch for details on Noticeboards!

MEMORIES OF 'THE LODGE' IN ST JAMES



When she saw that the Lodge in the grounds of St James was back in use as 'Wind in the Willows' Nursery, Sheila Mackie wrote to tell us about her childhood... "One of my earliest memories is visiting this lodge in the 50's when

my Uncle George (Roberts) and Aunt Nell lived there. He was the Chief Engineer for St James until he retired around 1958. I remember romping around the lily pond in the garden with their black Labrador. There was an archway through to a productive vegetable plot with strawberries and a greenhouse where frogs used to hide under pots. It was all beautifully maintained - Uncle George was a meticulous and practical man. He created some amazing tapestries, all from his own designs.

We lived in Baffins at the time and used to walk there to visit and it did seem a really long way. Down Stride Avenue, across the Eastern Road and following around the old shoreline before it was filled in and became Milton Common. (My sister remembers crossing via a causeway there in the interim). We followed the long wall of the pig farm to the north of St James (giggling and holding our noses) - the hospital produced a lot of its own food back then. I was fascinated by the old houseboats that lined the next bit of shore. How exciting to live in one of those! Then past the Lock gates for a canal that was never used - later it became the railway. Next the Thatched House - was it ever actually thatched? Then the Oyster House and we had finally reached the tree-lined grounds of the hospital and began searching for squirrels. The lodge looks much the same today. It's so lovely to see it is being well looked after and the lovely building being put to good use.
Sheila Mackie



KEEP MIL N GREEN!

ARE YOU BEING KEPT IN THE PICTURE?

When Kimberly and Martin announced at the last open Forum that they had started up a Facebook page keeping local Milton residents informed about the issues facing our area, no-one realised how popular it would be. With 856 members it is used to express opinions and to keep people informed about what is happening in this fast-moving

environment with information about community activist's statements, progress on planning matters, applications, etc. Keep logging into the site to stay up to date. Thanks very much to you both for taking on this commitment and putting in time to make it such a success!

On Sun. 25 January KMG supporters met in St James' Hospital to show their concerns at the NHS' planning application to fence in all the green areas they would like to develop. A 2metre high close boarded fence damages the setting of the Listed Buildings wrecking the character of the site which published Council documents seek to preserve. Watch Facebook to find out when the fencing decision will be made by Planning. You can also comment on the application for 30 homes on Light Villa site via <http://publicaccess.portsmouth.gov.uk/online-applications/14/01664/FUL> up to the Committee date, likely to be 11 March 2015 at 5pm. IF YOU SUPPORT THE KMG CAMPAIGN PLEASE PUT UP THE NEW POSTER IN YOUR WINDOW.

At the Forum on 23 February we expect to have speakers from Southern Water answering questions on when the sewage overflows at Eastney will cease, so come along to hear.

MILTON WILDLIFE DIARY 2014



National Wildlife Expert, Chris Packham has sent us his views so we can pass these on to decisionmakers

"I understand that a proposal for the site of St James Hospital grounds and also the land owned by Portsmouth University on the edge of Langstone Harbour in the Milton area of Portsmouth, is in discussion for housing development. I understand that this area is used by walkers, runners, children, dog

walkers and birdwatchers, not to mention the wildlife including bats.

What space do you imagine we will have left for life if we smother all our urban/ suburban green spaces? A rather daunting thought. What will there be for the youth of this area to enjoy in terms of natural resources? How will they engage with simple wildlife to engender a lifetime's affinity?

I grew up on the cluttered edge of Southampton in the 1960's and I learnt my "trade" on what was called "wasteland". Here my life was enlivened and enlightened by Frogs, Foxes and Newts. That land wasn't wasted on me. Do you want to waste that opportunity to protect something that valuable? Will your children, grandchildren thank you for it? I think not!

I cannot stress enough how important it is to keep natural areas such as Milton green" Chris Packham, Naturalist and Broadcaster

In Milton there has always been accessible wildlife and we are lucky that we have a very skilful and gifted photographer, Lorna who is out in all weathers and catches images which many of us miss. Over the past year these wonderful photographs show just what you can see in Milton if you visit the Common, the University playing fields, the shoreline and St James parkland. Yes, it's those sites again which we keep bleating on about, but they are the irreplaceable habitats where our wildlife lives and thrives. **But how much longer will they be available?** These sites are close enough to link together to form a 'green corridor' through to include Milton Park. Take an element out of this and we could lose a huge proportion of the animals, birds, insects and plants which grace our city. Overleaf are some of our local neighbours. Please pull out the centrefold and demonstrate you want to keep them here.

A RECORD OF WILDLIFE IN MILTON 2014



A RECORD OF WILDLIFE IN MILTON 2014





NATASHA SANDS
SOUTHSEA

HAIR STUDIO
60 Priory Crescent, Southsea, PO4 8RN
Tel: 02392 816002

OPENING TIMES

MONDAY	9AM-5PM
TUESDAY	9AM-6PM
WEDNESDAY	9AM-5PM
THURSDAY	9AM-7PM
FRIDAY	9AM-7PM
SATURDAY	9AM-4PM

30% OFF YOUR FIRST VISIT
- WITH THIS VOUCHER -

REDKEN

ahc

YOUR LOCAL FAMILY LAW SOLICITOR



RUTHERFORD SOLICITORS

257 MILTON ROAD

PORTSMOUTH PO4 8PQ

Tel: 02392 735700

www.rutherfordsolicitors.co.uk

HALF PRICE OFFER ON LASTING POWER OF ATTORNEYS until 28.2.15

VERY COMPETITIVE FIXED FEE OPTIONS

AVAILABLE IN FAMILY, EMPLOYMENT AND CIVIL LAW

WE OFFER LEGAL AID ADVICE IN FAMILY LAW (SPECIALISING IN CHILDREN MATTERS AND DOMESTIC VIOLENCE) *THEREFORE IF YOU ARE ELIGIBLE YOU MAY QUALIFY FOR FREE LEGAL ADVICE*

We are contracted with the Legal Aid Agency

We hold the Specialist Quality Mark

FANTASTIC OFFER ON WILLS AND LASTING POWER OF ATTORNEYS UNTIL 28.2.15 (T&C's apply)

Straightforward Individual Will: **£99** Straightforward Joint/Mirror Will **£149**

Half price Lasting Power of Attorney - **£100!!** (excludes registration and OPG fee) – (usual price £200)
- Please telephone us or call in to the office for further details

LOCAL NEWS

TESCO STILL ON THE BALL - An e-mail was sent to local Councillors by jack.pearson@uktesco.com on 8 January to reassure them that "despite the fact that Tesco's performance as a business has fallen significantly short of where we would want it to be and we have decided to cancel plans for 49 new store developments in the UK the Portsmouth store is NOT one of them and will go ahead." Viewers of a recent Panorama programme will no doubt be shocked to learn about the Tesco business model, supplier relationships and disclosures about the low- hours contracts of its workers. Are we are just pawns in Tesco's power games rather than valued customers and employees? *Chair*



THE HANTS & IOW WILDLIFE TRUST

SEASHORE SENSORY SAFARI FOR FAMILIES

Milton Locks Nature Reserve, Locksway Road, PO4 8LT

1.30 pm – 3pm on FRIDAY 20 FEBRUARY 2015

Booking through **Jess 01489 570240** £3 per child

PLAYING IN NATURE – 20 Feb and 14 March 2015 9am- 12noon

Course fee £30 phone **01489 774406** or view www.hiwwt.org.uk

An inspiring outdoor play workshop for parents, teachers, childminders



For the third consecutive year Milton Park has been awarded the sought after Green Flag. Some measure of the Park's success in achieving this award has been credited to a "gardening" volunteer group "The Friends of Milton Park". Following the hoisting of the 2014/15 Flag, a meeting was held at the nearby café over a cup of coffee and cake. The group discussed and decided on a mixture

plants to fill a void left where old overgrown shrubs had been removed. Perhaps they were inspired by the lovely Pure Ground garden



Milton Village Community Association

Milton Village Hall, 182 Milton Road, Southsea, Hants, PO4 8PR

Tel. 023 9287 3788 Email: allisonmvca@hotmail.com

Website: www.miltonvillagehall.co.uk

Office Hours: 9.30am – 12.30pm Monday to Friday

Pure Ground Coffee Shop open 9am – 4.30pm Monday to Saturday

Current Activities at Milton Village Hall

2 Halls & Meeting Area for hire. Ideal for children's parties, from just £30!

Monday	Tuesday	Wed.	Thurs.	Friday	Sat	Sun
Music Mad	Music Mad	Music Mad	Weight Watchers	Yoga	Tots Soccer	Keep Fit
Police Surgery	Scrapbooks (m)	Little Steps Gym		Games Club	Music Mad (F)	AA
Curling		50+ Keep Fit	Quiz Time	Tai Chi		Light House Church
Home Education	Beetle Drive (m)	Learning Latin	Pilates	Beginners Line Dance		
Zumba	Learning Latin	KARATE	Private Dance	Creation Station		
Tap Dancing	Yoga	Lighthouse Church	BSL Sign Language	Learning Latin		
		Keep Fit	Line Dancing	Yoga		



Events at Milton Village Hall

Quiz Afternoons – 1st Thursday monthly 2-4pm (5 Feb etc)

Beetle Drives – 3rd Tuesday monthly 2-4pm (17 Feb etc)

Both activities are just £2pp including refreshments and prizes!



Pure Ground Coffee Shop at Milton Village Hall

Restaurant Evenings are returning on selected Saturdays! Enjoy a delicious 2 or 3 course dinner from just £12.50! **Vintage Afternoon Teas** are also planned throughout the year, the first being Thursday 26th Feb – Just £9.99! Advance booking necessary for all coffee shop events.

Please contact Pure Ground on 02392 823040 for more info.

New Summer Trips & Activities Programme out end of March!

All enquiries: please contact the office or see our website



Like us on Facebook for the latest news & info

PICNIC ON THE GREEN 2015 - 20 JUNE



Put the date in your diary and join us at St James Field for a day of family fun from 2pm. Punch and Judy, Bouncy Castles, races and games for all.

We are well supported by local organisations who offer stalls, activities and help us to run the event. If your organisation would like to take part and particularly if you would like to run a children's event, do please contact us at MiltonNForum@aol.com or telephone 02392 736153

NOW IN THIS AREA!



Do you want to exercise to music
and improve your
posture, strength
and flexibility?

Come along to a class that's
friendly, low-impact and fun!

**Tuesdays
6:15 – 7:15 pm
Miltoncross Academy
Milton Road**

For more information please contact Lisa on:
02392 812472 07903 953383



Women's League of Health and Beauty is a Charity registered in England no. 028107
Company registered in England no. 487400
Registered office: 100-102, Carlton Place, Southampton SO15 2EA



Phone

02392812474 07903 953383

GUIDE TO LOCAL SERVICES IN MILTON



MOTOTECH – Unit 8, Warren Avenue Industrial Estate
 For all your mechanical requirements MOT's and recoveries available. Tel:
 023 9287 4784
 Specialists in Performance and Luxury Cars

BJM UPHOLSTERY LTD
 107 Guildford Road, Fratton
 Tel: 02392 822642

Foam cut to size, cushions filled, also re-



upholstery



CTN (Confectionery, Tobacco & Newsagent)
 add Stationery Photocopying/Faxing and Greeting
 Card Specialist and you have
 JG Riley, 90 Locksway Road, Tel. 9273 1574

Open Mon-Sat 06.30 - 18.30 (Lottery 19.30) Sun.06.30 -13.00

M.S.KING & SON – 273 Milton Road. Tel: 023 9275 2015
 High class butchers. Fresh cooked meats.
 Open Mon: 8 am to 1.30pm, Wed: 8 am to 1 pm,
 Tues/Thurs/Fri/Sat: 8 am to 5.30 pm
 Free delivery in local area



Reeboot Computer Solutions – Mobile Computer Services
 Fast, Friendly and Reliable



For home and small business computer users of all abilities
 Repairs, advice, training, virus removal
 Phone Steve on **02392 735751**, 42 Dunbar Road, Milton



Shaw Trust Horticulture, St James' Hospital
 Locksway Road – Phone 02392 727714

Open Mon-Thurs. 8-4pm; Friday 8-12.30 pm

For garden services and Landscaping

We sell a range of shrubs, perennials, herbs, indoor plants compost and bark plus
 handmade garden furniture

We can deliver locally

GUIDE TO LOCAL SERVICES IN MILTON



STEPHEN HARDHAM CARPENTRY
For all your carpentry needs no job too small.
Honest, friendly and reliable service

Phone 07747 721427 for a free no-obligation quote



THE JOHN DOYLE PARTNERSHIP – Accountancy Services
Marian House, 62-64 Priory Crescent. Tel/Fax:023 9261 0450
Payroll and accountancy services for small businesses, sole traders, partnerships and limited companies. Contact Kevin Doyle
www.thejohndoylepartnership.com e-mail info@thejohndoylepartnership.com



CHERRY ORCHID BEAUTY
MOBILE AND HOME BASED THERAPIST – **AMY 07530000821**

OFFERING SHELLAC MANICURES/ PEDICURES,IBX NAIL REPAIR, CALLUS PEELS ,THREADING, LASH / BROW TINTS, LASH LIFTS, WAXING, FACIALS, VARIOUS MASSAGE INCLUDING INDIAN HEAD AND PREGNANCY.

QUALIFIED ,FRIENDLY & PROFESSIONAL

WWW.CHERRYORCHIDBEAUTY.CO.UK FACEBOOK; CHERRYORCHIDBEAUTY

CHERRY ORCHID BEAUTY IS NOW INTRODUCING THE AWARD WINNING HEALTH AND BEAUTY ORGANIC RANGE FROM NEALS YARD REMEDIES. TRY A FACIAL, MASSAGE OR HAND AND FOOT TREATMENT. ALL PRODUCTS USED ARE 100% ORGANIC/NATURAL, ,PACKED WITH ESSENTIAL OILS, NOT TESTED ON ANIMALS – FAIR TRADE – ECO FRIENDLY CONTACT **AMY** FOR MORE INFORMATION



- PC & laptops repairs
- Virus and spyware removal
- Custom build and upgrades
- Networking & WiFi
- Data recovery
- and much more

Your local PC repair man based in Milton. If you need help with a sluggish PC or even just setting it up, call Dave on **07944 917 293**.
No job too big or small, no fix no fee

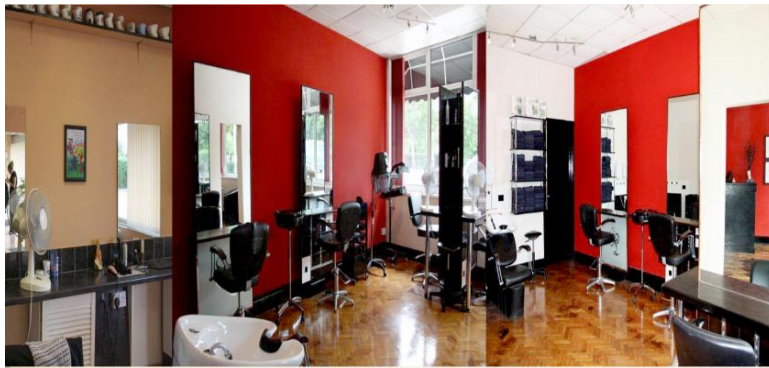
ADVERTISING RATES Contact John Couch (02392 643490)
Full page £100. Half page £50. Directory entry £15.
for your next advertisement John.couch4@ntlworld.com



‘your local hairdresser’

***friendly staff – professional
service for all the family!***

**Creative cuts * Styling & Colouring
Wedding & Prom hair
Tanning booth**



Gents Hairdressing

02392 2911

Gents open 6 days a week

Ladies closed Wed

3/5 and 9/11 Locksway Road Milton

MILTON NEIGHBOURHOOD FORUM COMMITTEE

MiltonNForum@aol.com

Janice Burkinshaw – Chair
Dave Wilcox – Vice Chair
John Couch – Treasurer
Jenny Bellinger, Asst. Treasurer
Margaret Nicholas- Secretary
Paul Docking
George Dominy
Pamela Matthews

Dominic Goodyear
Peter Harling
David Jordan
Lyn Mills
Peter Mills
Larry Nicholas – co-opted
Demitris Papanicolaou

Ward Councillors – Milton

Cllr Will Purvis
53 Boulton Road
Southsea, PO5 1NS
(07590 282135)
wapurvis@me.com
Cllr. Ben Dowling
101 Methuen Rd, PO4 9HQ
(07540947364)
btldowling@yahoo.co.uk
Cllr Gerald Vernon-Jackson
39 Lindley Ave., Southsea
PO4 9NT
(02392 834551)
geraldvj@gmail.com

Ward Councillors - Baffins

Cllr. Darren Sanders
58 St Mary's House
St Marys Rd, Portsmouth
(02392 838963)
darrensanders59@gmail.com
Cllr. Lynne Stagg
71 Highgate Road, Copnor
(02392 780245)
Lynne.stagg29@gmail.com
Cllr. Stephen Hastings
19 The Reldas, Oyster St.,
PO1 2JB
(07870 127024)
cllr_hastings@ukipportsmouth.co.uk

Please contact any Forum Representative or Ward Councillor for more information or assistance

***If you would like to be a Neighbourhood Forum Representative please write in to the
Neighbourhood Forums Freepost address:-***

FREEPOST (SCE4514) PORTSMOUTH PO1 2YZ

or e-mail MiltonNForum@aol.com

Supported by



Portsmouth
CITY COUNCIL

The Neighbourhood Forum is
responsible for editorial content, design and distribution of Milton
Matters. Printed by Bishops Printers